



ANGLICAN PARISH OF BALLINA

PROFILE – May 2026

Ballina and Lennox Head Anglicans

Respecting the traditional people of this land, the Bundjalung people



ANGLICAN PARISH OF BALLINA, DIOCESE OF GRAFTON

TABLE OF CONTENTS

AN INVITATION. COME- JOIN US ON OUR MISSIONAL JOURNEY	3
MISSION AND MINISTRY 2026 AND BEYOND.....	4
RECENT INITIATIVES.....	4
DIOCESAN RESTRUCTURE.....	5
PARISH PROGRAMS, ORGANISATIONS AND ACTIVITIES	6
THE PARISH	9
STAFFING	10
RECENT RECTORS	10
LITURGICAL SERVICES	11
ATTENDANCE STATISTICS- summary	12
GOVERNANCE	13
PROPERTY PORTFOLIO- HISTORY.....	14
EMMANUEL ANGLICAN COLLEGE.....	15
CENSUS INFORMATION FOR BALLINA SHIRE.....	16
FINANCIAL MATTERS.....	17

PARISH NOMINATORS

Mr John Bryen
Mr Hugh McIntosh
Dr John Phillips

PARISH CHURCHWARDENS

Mrs Kerry Johnston
Mr John Bryen

PARISH OFFICE

Office Administrator: Mrs Cathie Guest. 24 Burnet St Ballina NSW 2478



Anglican Diocese of Grafton

Vision Statement : *Transforming lives through Jesus Christ.*

Mission Statement: *Sharing the good news of Jesus Christ, making disciples and growing faith communities.*

God calls us to...

Worship and pray *creatively* encountering God in old ways and new

Think and learn *eagerly* discovering more about God and faith

Serve and care *generously* sharing God's love and justice in our community

Accept and include *compassionately* because God's table has a place for everyone

***JOIN US ON OUR MISSIONAL JOURNEY AS OUR TEAM LEADER
ON THE BEAUTIFUL NORTH COAST OF NSW***

Whilst we are passionate about worshipping in the Anglican tradition, we have a genuine openness to explore diverse ways in which people might explore faith, worship and spirituality.

We are equally passionate about embracing the social justice side of mission and ministry.

We are people of lived faith with many volunteers using their gifts to support our varied ministries.

We are in a financially sound position with a well-maintained property and investment portfolio.

We have a desire to grow the Church so that it can be an inclusive place for seekers, inquirers and explorers of the faith as we continue to explore ways to Be Christ in the wider community.

Where we feel particular energy and passion for God at work is when we are connecting with the community outside our regular worship services.

We are developing a closer connection between our parish churches and Emmanuel Anglican College in Ballina.

We are seeking a leader:

who is an effective communicator and able to be pastorally attentive to parishioners.

who can preach and teach the gospel clearly, creatively, and in ways that connect faith with contemporary life, while remaining deeply centred on Jesus.

who has the capacity to listen well, show empathy, exercise emotional intelligence, and respond with sensitivity to the needs and circumstances of parishioners.

with collaborative leadership skills who can identify, encourage, and develop the gifts of others, willing and able to assist in the equipping people for ministry and helping to build confidence in sharing faith.

who is welcoming and has a community-oriented approach to ministry with an openness to current ministries, fresh opportunities for outreach, a range of worship styles, recognising the important role of music ministry in drawing others into the life of the church.

who can relate well across different groups, especially young people and men, while bringing vision, prayerfulness, consistency, and sufficient technological skills to support ministry effectively in a contemporary setting.

Following a decision made by Grafton Diocesan Synod in 2025 the clergy working week is now five days a week, commencing on January 1, 2026.

Is God calling you to be our next Rector?

MISSION AND MINISTRY IN 2026 AND BEYOND

RECENT INITIATIVES

House Blessings

Renewal of Marriage Vows celebration.

Musical Reflections- during Advent and Lent and other times of year.

Death Café- a monthly gathering providing a safe place to talk about death and dying.

Hope 25 – Weekly ‘Conversation Station’ outside the Op Shop. Hopefully will continue.

Saturday Community Breakfast – three Saturdays a month in partnership with Lennox Head Lions and the Orange Sky Van for laundry and showers.

Backpack bed – for people experiencing homelessness.

BRAD Project (Banish Recycle and Diversion)- recycling items not recycled by the local Council.

Walk for Peace- community event as part of the worldwide annual Labyrinth Walk for Peace.

Workshop attendance- Accidental Counselling and Workplace Responses to Sexual Violence.

Participation in Senior Expo and Community Volunteer Expos in Lennox Head and Ballina.

Annual thank you to volunteers with special High Tea.

Provided clothes, towels, blankets and food, chaplaincy and volunteers for the disaster recovery evacuation centre as required.

Looking Ahead and Envisioning

Our hope is to:

continue the parish’s existing ministries, extending more intentionally into the wider community. This may include refining and strengthening initiatives such as Isaiah 61 while encouraging more people to share in this work so that leadership capacity can be broadened and sustained.

be a thoughtful and courageous voice for social justice, for both people and animals;

deepen our wider engagement through interfaith dialogue;

create stronger links between Parish Council and Emmanuel Anglican College exploring the creation of a dedicated liaison role and scholarship and sponsorship opportunities.

be a church that is flexible, vibrant, and able to nurture younger participation, while continuing to offer strong pastoral care to existing parishioners, helping people remain connected.

increasingly involve ourselves within the wider community, seeing what God is doing in our community while praying for ‘the eyes to see ’God-given opportunities when they emerge and discern ways to provide a Godly response.

Opportunities and Possibilities

St Mary’s Precinct: investigate the opportunities from the changed use of land around St Mary’s Church .

Investigate options for increased use of St John the Baptist church building.

Using the resources of the parish to connect more effectively with Emmanuel Anglican College community.

Possibility of employing a second priest as a Pioneer Community Minister with a focus on Mission and Faith Formation, bringing an understanding of God to people where they are at, meeting the needs of people in our community.

Being more missionally intentional with some existing activities, e.g. St Mary's Music Estuary Program, Anglican Op Shop.

Prayer Ministry- underpin all our mission and ministry activities in prayer.

Nurturing individual spirituality.

Continue our culture of being welcoming and inclusive.

Providing a 'safe space' environment to discuss current social justice issues

With a focus on mission, the potential use of our property and resources will become obvious. We look forward to input from the new Rector as we discern together God's mission for us.

DIOCESAN RESTRUCTURE

Restructuring for Mission and Ministry: Daring to Live into God's Future for Us was endorsed at the Synod in 2020. Part of the Restructure is a focus on different models of ministry. Model 2 (networking) has been selected for the future of this parish. Ballina Parish is part of the Ballina-Alstonville Network including the Parishes of Ballina and Alstonville, as well as Emmanuel Anglican College. In this model, Parishes retain their individual identities and their own Parish Councils, while licensed ministers (ordained and lay) work together in different ways across the whole network.

PARISH HEALTH CHECK

Parish Council members completed a Diocesan document, *Parish Health Check*. The following strengths were identified-clergy leadership, our vision and purpose, the scope of lay ministry and capacity of our Licensed Lay Ministers (LLMs), strong sense of belonging and community with evidence of trust and respect, our financial viability, new mission initiatives, especially engaging with the local community and our governance and capacity as a Parish Council. Areas requiring monitoring and further development- a proactive culture of invitation and welcome, making new disciples and strategically engaging with ministry units in our network of Alstonville Parish and Emmanuel Anglican College.



PARISH PROGRAMS, ORGANISATIONS AND ACTIVITIES

ISAIAH 61 PROJECT- commenced March 2022



***The spirit of the Lord God is upon me, because the Lord has anointed me;
he has sent me to bring good news to the oppressed, to bind up the broken-hearted,
to proclaim liberty to the captives, and release to the prisoners. (Isaiah 61:1)***

The impetus for this project was the people who were coming to the Parish for food vouchers each Monday morning during COVID, who shared their stories of increasing hardship in an uncertain world. We believe God calls this Parish to bring good news to the poor, to bind up the broken, to free those held captive by poverty and despair.

Over time the Isaiah 61 Project has evolved into the following outreaches:

- Free BBQ breakfasts three Saturdays each month, supported by Parish volunteers and the Lennox Head and Ballina Lions Clubs. As well as serving breakfast, the Orange Sky van provides free showers and laundry. Our Op Shop provides free winter clothing, our Craft Group makes blankets and beanies to give away, and the Quota organisation provides free toiletries to be donated.
- Free backpack beds are available for people experiencing homelessness.
- A community Christmas Day lunch is hosted and co-ordinated by the parish with many community volunteers as part of the organisation. Over 200 meals are served.
- We play an active role in networking with other local service providers, as we explore how we can better support one another and work together to fill gaps.
- We are a voice for the voiceless, often invited to participate in discussions with local, state and federal governments to highlight the needs in our community, especially in areas of housing and food insecurity.
- We offer our facilities to AA, Al Anon and NA.
- We offer a base for the Orange Sky laundry van free of charge.
- Threshold Singers (binding up the broken hearted in song) sing at the bedsides of those who are dying, or in pain of body or spirit.

ST MARY'S MUSIC ESTUARY



The Music Estuary is a monthly cycle of concerts throughout the year. This is part of the music ministry of the Parish.

The name 'St Mary's' refers to the church building that has made a name and is well known in the Northern Rivers for its musical activities, fine acoustics, grand piano and pipe organ.

The Music Estuary program connects us with the wider community. Concerts have created a regular following, with audiences coming from throughout the Northern Rivers and even Queensland. Performers are renowned nationally and internationally. Attendance at concerts ranges from 80 to 300 plus.

Concerts bring in many people who would not attend or connect with 'church' or traditional forms of worship. Through ongoing connection, some regular concert-goers now also participate in our music reflections and other offerings such as Nine Lessons and Carols.

Our concerts have become part of community life in Ballina and the surrounding area. St Mary's is known for its music, hospitality and welcoming openness.

To see our program go to the website www.themusicestuary.org.

PRAYER MINISTRY

- Advent and Lenten Daily Reflection booklets.
- Parish Prayer Chain: available to anyone who requires prayer for themselves and for others with their permission. This is a confidential ministry.
- Weekly Parish Prayer for the bulletin: parishioners, on a rostered basis, write a weekly prayer that is relevant to what is happening in our day-to-day world.
- Year 12 Emmanuel Anglican College Prayer Team: The students know they are being prayed for on a regular basis. The Team Leader liaises with the College Chaplain and sends regular emails of encouragement to the students during the year.
- Weekly Schools' Prayer: Each week a prayer is included in the weekly newsletter with a different aspect of school life being the focus.
- Weekly prayer meeting in St Mary's Church, praying for our community.
- A Healing Prayer Group also runs regularly.

MISSION SUPPORT Five percent of budgeted offertory each month goes to the following groups: Anglican Board of Missions (ABM) 7months; Church Missionary Society (CMS) 4 months and National Home Mission Fund (NHMF) 1 month.

Mission of the Month is promoted in the weekly bulletin.

Five percent of budgeted offertory is allocated each month plus donations from parishioners to the following groups: Anglicare Affordable Housing, The Bible Society, Bush Church Aid (two months), ABM - Lent, Advent and Diocesan Auxiliary Project, CMS, Anglican Overseas Aid, Act for Peace project, Prison Fellowship Angel Tree.

Special appeals are supported: local, national and international.

Local mission support goes to: Ballina Christian Education Committee (Chaplain in the state High School), Primary school SRE material, Isaiah 61 Project activities.

STATE SCHOOL RELIGIOUS EDUCATION (SRE) Ballina Christian Education Committee: Co-ordinates SRE in state schools. Two Parish representatives are members of this committee. The parish also has members that are a part of the team of teachers. Parish financially contributes to the employment of part-time chaplain in the State High School.

State Primary Schools: Combined Protestant Special Religious Education weekly classes. Parish contributes towards resources and booklets for children

ANGEL TREE MINISTRY Members of the Parish have generously supported this ministry to children of prison inmates for over 25 years. In 2025, parishioners and the parish donated \$2645 for Christmas gifts to be purchased for children of inmates.

ANGLICAN OP SHOP

The Op Shop operates from a special purpose building owned by the Parish. It is staffed by a team of over fifty volunteers. The Op Shop is open Monday to Friday from 9.00am to 3.30pm and on Saturday from 9.00am to 12.30pm. As well as providing an outlet for good value clothing, it also provides a social meeting place for buyers and volunteers alike. It is in its 29th year of operation.

The Op Shop makes a valuable financial contribution to Parish finances (2025- \$313 797). Funds are also used to support the parish mission in connecting with the community.



MU AUSTRALIA A faithful and dedicated group who seek to honour the ideals of Mothers Union through their commitment to a variety of projects as well as supporting Diocesan functions and activities.

CRAFT GROUP The Craft Group meets weekly on Monday morning for fellowship and sharing skills and talents. The ladies go to lunch after Craft. Items made by the Craft Group are sold at various community fund raising activities or donated to individuals with a special need.

DEATH CAFÉ Led by an LLM, monthly gathering providing a safe place to talk about death and dying.



SOCIAL ACTIVITIES Regular activities in the community with a meal e.g. Pancake Tuesday in the local McDonalds, guest speakers with morning tea at a local café, information workshops e.g. recycling, visits to museums.

THRESHOLD SINGERS The former Rector is the Musical Director of the Threshold Singers. Small groups of singers attend the bedside of people who are approaching death. The singers come from all parts of the community. The Choir uses St Mary's Church building for weekly practice. A family member of one person the Choir sang for described it as "the most spiritual experience of my life."

MONTHLY MEN'S GROUP Meet in a local café for fellowship and breakfast.

THE LABYRINTH In the grounds of St Mary's Church; a place for quiet reflection and prayer, individually or in small groups.



CURSILLO Many parishioners have participated in Cursillo weekends. Cursillo is promoted in the parish.

WEEKLY BULLETIN The Weekly Bulletin is available at each service, the Op Shop and is mailed (emailed or posted) to parishioners and those requesting it. The mailout also includes the readings for the week. A monthly report from Parish Council is included.

THE PARISH

LOCATION & MAJOR TOWNS/AREAS

Ballina is located in an area known as the Northern Rivers in the State of New South Wales, Australia. It is a modern, well serviced town, located on the banks of the Richmond River just off the M1 Motorway (Pacific Highway), the major highway joining the major State capital cities of Brisbane, Queensland to the North (2 hours by car, 190 kms) and Sydney, New South Wales to the South (8 hours by car, 770 kms).

Lennox Head is a coastal town 13 kms to the north. Significant growth areas in the Parish are located at Lennox Head, Skennars Head, about halfway between Ballina and Lennox Head, and Cumbalum, 8 kms to the north-west of Ballina.

The Parish of Ballina is set in the Shire of Ballina excluding that part covered by the Parish of Alstonville to the West and Wardell to the south (Parish of Mid Richmond). It includes the major church and administration centre of St Mary's in Ballina and St John the Baptist in Lennox Head.

Ballina is thought to be named either from Aboriginal words meaning 'place of fish and oysters' or 'fighting ground' or after a town in Ireland.

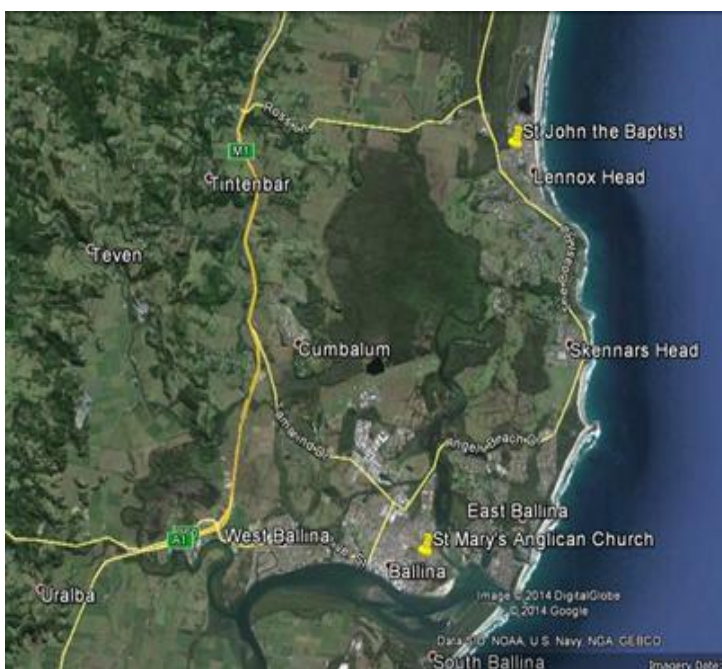
The traditional owners and custodians of the area are the Bundjalung people.

Ballina is well serviced by health and other professional services. It is 35 kms and 90 kms respectively from the major health centres of Lismore and the Gold Coast. Education needs are well provided for by two State Primary Schools and a State High School in Ballina and a Primary School in Lennox Head. The Parish is closely associated with Emmanuel Anglican College in West Ballina which provides for Pre-school through to Year 12. There is a Catholic Primary School in Ballina and Skennars Head, a Catholic Secondary School at Skennars Head and a Christian College in Ballina. Southern Cross University is located in Lismore with a TAFE College in Ballina, Wollongbar and Lismore.

The popular tourist destination of Byron Bay is on the coast 30 minutes north by car from Ballina.

Ballina has extensive sporting and recreational facilities for all ages.

The Ballina Byron Gateway Airport, 10 minutes from the Ballina town centre, is a busy transport hub with several daily jet services to and from Sydney as well as regular flights to Newcastle and Melbourne. The Gold Coast Airport at Coolangatta, about an hour by car, provides connections to major Australian and NZ cities as well as tourist destinations in Australia, NZ and South East Asia. International flights to major overseas destinations are available through Brisbane Airport, approximately 2.5 hours by car.



STAFFING

RECENT RECTORS

2022-2026: The Reverend Cathy Ridd working five days a week. (Retired)

2015-2022: The Reverend Canon Matthew Jones (currently Rector of Camperdown and The Holy Apostles, Diocese of Ballarat)

ASSISTANT CURATE

2023-2025: The Reverend Mandy Larkin, working five days a week. (Priest-in-Charge Parish of Murwillumbah from January 2026)

MUSIC CO-ORDINATOR- Part-time

2018 to the present: Mr Hamsa Arnold. Employed 29 hours a week.

OFFICE ADMINISTRATOR

Mrs Cathie Guest: Monday to Friday- 9.00am to 2.30pm. (25 hours per week)

VOLUNTEER OP SHOP CO-ORDINATORS

Mrs Ann Emery and Mrs Julie Harwood in a voluntary capacity.

RETIRED LICENSED PRIEST ASSOCIATED WITH THE PARISH

The Reverend Major Richard Brown.

NON-STIPENDIARY LICENSED LAY MINISTERS

Licensed Lay Ministers- Mrs Kerry Johnston, Mr John Bryen, Dr John Phillips, Mrs Pat Kerr.

LITURGICAL SERVICES

2026 Sunday and Mid-week Services

St Mary's Ballina: Sunday 10.00am: Holy Communion- following APBA - Second Order on data projector with *Roots on the Web* variations, and occasional use of creative liturgy, e.g. for Pentecost, Aboriginal Sunday, NAIDOC week. Some sung responses. Music- organ/ piano with singing group occasionally. Organised by clergy with Lay Assistants and lay participation. Average attendance: 2025- 58. Majority over 70 years.

St Mary's Ballina: Wednesday 10am: Second Order from Prayer Book and Hymn Book with Sung Eucharist on first Wednesday of the month. Music-piano. Organised by clergy with Lay Assistant and lay participation. Average attendance: 2025-10. Majority over 75 years.

St John the Baptist Lennox Head: Sunday 8.00am: Holy Communion - service on the data projector using the same liturgy as at St Mary's, Ballina. Combined service at St Mary's whenever there is a fifth Sunday. Music- Keyboard. Organised by clergy with lay participation. Average attendance: 2025-20. Majority over 60 years.

RETIREMENT VILLAGES AND NURSING HOME SERVICES Services are held monthly in the following: St Andrews Nursing Home, St Andrews Village, RSL Life Care Chapel and Crowley Village.

PALM LAKE RESORT Twice a month at 11.30am followed by lunch. Average attendance: 2025-16

HOME COMMUNIONS Occur monthly.

YOUTUBE MUSICAL REFLECTIONS 20-minute videos of reflective music are created for various seasons, e.g. Lent and Advent. These videos are produced by the Music Co-ordinator Hamsa Arnold and former Rector Rev Cathy Ridd. The Parish YouTube channel is 'Ballina Lennox Head Anglicans'

SPECIAL SERVICES

- Nine Lessons and Carols
- Christmas Eve Family Service
- Christmas Day service overlooking the beach at Lennox Head
- Ash Wednesday services at both worship centres
- Ecumenical Easter morning service overlooking the beach at Lennox Head
- Domestic Violence Sunday

- Blessing of the Animals
- All Souls' Service of Remembering and/or Blue Christmas service
- Emmanuel Anglican College Chapel services approximately two per term
- Significant National and Community Events

BAPTISMS

2025: 5 By arrangement as part of a church service or as a baptism service.

WEDDINGS

2025: 0 By arrangement. No fee is charged for use of the church buildings. Fee for music.

FUNERALS

2025: 9 By arrangement in a church building, chapel, crematorium or graveside. There is no fee for clergy or the use of the church buildings. Fee for music.

ATTENDANCE STATISTICS- summary

2025:

- St Mary's average per Sunday- 58
- St John the Baptist average per Sunday- 20
- St Mary's 10am service average Wednesday- 10
- Palm Lake Resort average per service twice a month on Wednesday- 16
- Four Nursing Homes; services held monthly average per service- 8
- Home communions- 61 home visits



GOVERNANCE

PARISH COUNCIL

Parish Council meets monthly. Committees present items and recommendations for consideration and approval by Parish Council and then have the responsibility for implementation. A written progress report is presented to each General meeting.

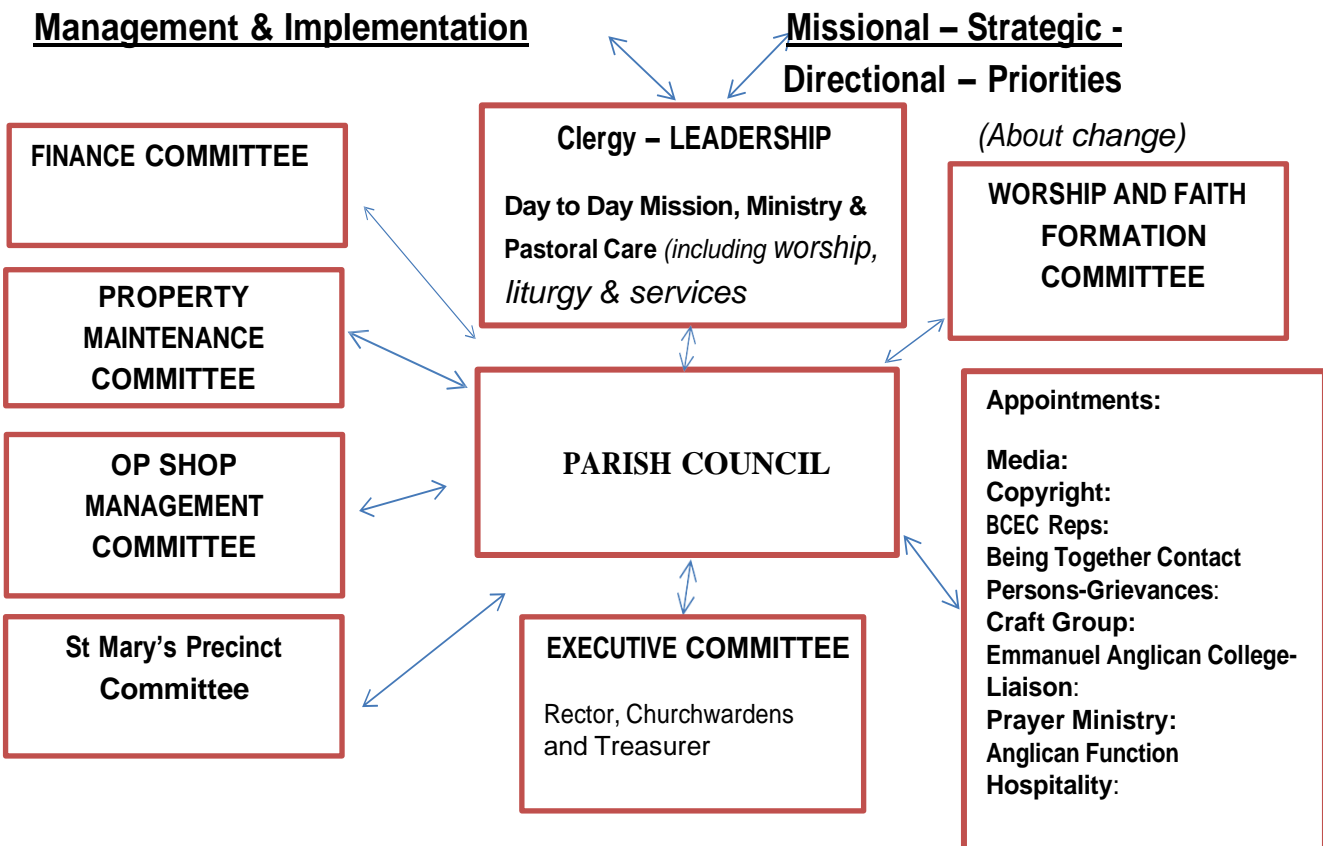
The Executive Committee of Parish Council (Rector, Churchwardens and Treasurer), meet as required to plan, co-ordinate and reflect on Parish life.

Each Committee prepares a written report to be included with the agenda for each Parish Council meeting. It will include a summary of the actions of the Committee in implementing decisions referred to the Committee by Parish Council and recommendations for consideration by Parish Council, including draft motions. Where possible, background information is included to assist Parish Council in making an informed decision in a timely manner. The Committee undertakes the research, considers options and possible implementation strategies for any matter or action under consideration.

Meetings commence with a reflection and prayer, prepared by a member of Council.

Committee Reports form part of the official minutes of Parish Council.

Parish Council: The operation and Roles and Responsibilities of Parish Council are listed in the Grafton Diocese Governance Ordinance 2008 Amended 2025, Chapter 10.



PROPERTY PORTFOLIO- HISTORY

SUMMARY

By 1844 church services were already being held in Ballina. A small church was completed in 1876. The Parish of Ballina was created in the 1890's. The church building on the present site of St Mary's Ballina has served almost thirty years. The replaced church building was dedicated in 1906.

Specifications for the replacement of St Mary's Church were finalised in 1995 with the new building being consecrated and dedicated on 6th September 1998. External maintenance and painting was undertaken in 2006 and internal painting in 2014.

Following sale of properties in 2002, land was purchased with construction of the Op Shop completed in 2003.

The house in Burnet Street was rented prior to 2002 before becoming the Rectory.

The Chickiba Street Clergy House was purchased in 2006. It is presently rented for \$700 a week.

St John the Baptist Church Lennox Head: The record of the first service in Lennox Head was at North Creek on 5th January 1896. The first church building was dedicated on 26th October 1898 on North Creek Road. Services were held monthly until the church building was moved to the village of Lennox Head in 1947. In 1998 land was purchased for a new church building with construction completed in 2003. The present church was consecrated on 13 February 2004.

PROPERTY SUMMARY

St Mary's Anglican Church Precinct: Corner of Norton and Burnet Streets Ballina.

The Precinct consists of three adjoining blocks- St Mary's Anglican Church on one block;

Administration/hall- to be demolished due to extensive mould and age and storage shed on the other two blocks.

Mid 2024: With the closure of the Administration/hall building the Parish Office, Clergy Office and printing/workroom were relocated to St Mary's Church building.

St John the Baptist Anglican Church: Corner of Fern and Byron Streets Lennox Head.

Rectory/Clergy House: 28 Burnet Street Ballina

Clergy House: 127 Chickiba Drive East Ballina.

Anglican Op Shop: Corner Tamar and Grant Sts Ballina

USE OF FACILITIES

Weekly use of the two church buildings: AA, NA, Al-Anon for friends and relatives.

Community use for meetings such as Meals on Wheels, choirs and music groups. Occasional use for meetings by St Andrews with residents of St Andrew's Glebe Village.



St Mary's Church Ballina



St John the Baptist Church Lennox Head



Clergy House 127 Chickiba Dr East Ballina



Clergy House (Rectory) 28 Burnet St Ballina

EMMANUEL ANGLICAN COLLEGE



Emmanuel Anglican College (EAC) opened in 1998 in the former Anglican Conference Centre in East Ballina with a student population of 16. The College was an initiative of the Anglican Parish of Ballina.

Emmanuel Anglican College is now situated on approximately 6ha of land in West Ballina. Architecturally designed in keeping with the style and climate of northern New South Wales, building commenced on the site in 1999 with classes commencing in 2000.

EAC has an enrolment of over 800 students from pre-school to Year 12. It is one of five Anglican schools in the Diocese of Grafton. Enrolment is projected to grow to 1080 students by the end of the decade. EAC has a very positive reputation as a school of excellence on the Northern Rivers.

Connections exist between Emmanuel Anglican College and the Parish of Ballina. St Mary's Anglican Church is used for chapel services and College activities. The College Council has a position for the Rector of Ballina.

EAC Web Site: <http://www.eac.nsw.edu.au/>

CENSUS INFORMATION FOR BALLINA SHIRE

SETTLEMENT HISTORY

European settlement dates from 1842, with land used mainly for timber-getting and agriculture. From the 1860s, land was used more for sugar cane growing, maize growing and dairy farming. Gradual growth took place during the late 1800s. Significant development occurred from the post-war years, with the population increasing from about 8,000 in 1947 to about 9,000 in 1966. Rapid growth took place during the 1970s and 1980s. The population increased from under 11,000 in 1971 to 19,000 in 1981, and then to 39,000 in 2011. Today the shire population is over 45 000. Rural land is used largely for grazing, fruit and nut growing, sugar cane as well as fisheries.

POPULATION HIGHLIGHTS

Land area: 484 square kilometres. Land use: Primary production- 69%; parkland- 7; residential- 5%; other- 20%.

Shire population: Census 2021- 46 296. Estimated 2024- 47 935. Twelve month growth 1.39% compared to regional growth 1.06%.

The major differences between the age structure of Ballina Shire and Regional NSW (2021 census) were:

A *larger* percentage of 'Seniors' (15.5% compared to 13.0%)

A *larger* percentage of 'Empty nesters and retirees' (14.8% compared to 13.3%) A *smaller* percentage of 'Young workforce' (9.2% compared to 11.6%)

A *smaller* percentage of 'Tertiary education & independence' (6.0% compared to 7.6%)

The largest changes in the age structure in this area between 2016 and 2021 were in the age groups:

Seniors (70 to 84) (+1,629 people)

Parents and homebuilders (35 to 49) (+683 people)

Young workforce (25 to 34) (+681 people)

Empty nesters and retirees (60 to 69) (+502 people)

Median age: 48 years.

People born overseas- 12.7 % with the majority from United Kingdom, New Zealand, South Africa and United States of America.

Language: 89.7 % speak English only.

Employment: 55.5% were employed; of those 49.2% in full time employment. 3.4% were unemployed.

Income: Overall 9% of the population earned a high income and 31.8% earned a low income.

Volunteer work: 17.3% reported doing some voluntary work.

Housing: 39.7% fully owned and 25.6% were purchasing their homes; 21.9% were privately renting and 3.5% were in social housing.

RELIGION In Ballina Shire in 2021, the largest religious group was Western (Roman) Catholic (19.7% of all people), while 42.6% of people had no religion and 6.8% did not answer the question on religion. Anglicans- 6 929 (15%).

FINANCIAL MATTERS

Financials Available on Request.

Parish Life



