

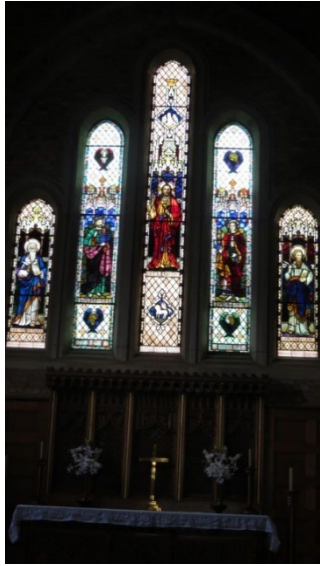
DIOCESE OF GRAFTON

Anglican Parish of Lismore



'A place to find the heart of God and each other'





Parish Church of St Andrew

Lismore

New South Wales

'We are an open family Church in the Anglican tradition striving to connect, grow and serve in Christ. We will connect to the wider community intentionally and meaningfully seeking to bring transformation of life through faith in Jesus Christ.'

What we believe: We are an Anglican Church! Seems like a simple statement of affiliation, but what exactly does it mean?

Yes it means that we are a part of the Anglican Church of Australia but more than that it means that we are a church that embraces the diversity of life and belief. We believe in the scriptures, and we base our worship on the Book of Common Prayer and subsequent prayer books of Australia.

What we believe is that every human being is loved by God, and we believe that we are called to share that love. We believe we are to love everyone and to put that love into action. We strive to be a church that is the family of God here in our part of the Northern Rivers area of New South Wales.

We believe we are called to show God's love to all people, regardless of their life situation. We are called to reach out in compassion to those who are doing it tough. We believe that we are called to feed the hungry, clothe the naked, release to those who are captives, bind up the broken hearted and to bring God's good news to those who need to hear it.

Ultimately, we believe in Jesus Christ and his power to transform lives. We believe that because of Jesus' death and resurrection we can have forgiveness of sins and a new relationship with God and with each other.

Do these beliefs articulate your own? Are you called to be our next Incumbent? We invite you to learn more about our parish and our community as you discern God's call on your life.



Heart displayed on side of St. Andrews Church during the recovery effort after the historic floods of 2022.

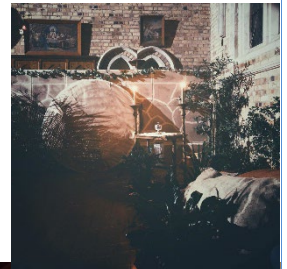
Things we value and are passionate about in our parish:

- Diversity of worship styles
- Welcoming and inclusive community
- Strong volunteer culture
- Our Lay Ministers and Music Team
- Anglican Identity
- Importance of celebrations and special occasion services
- Mainly Music



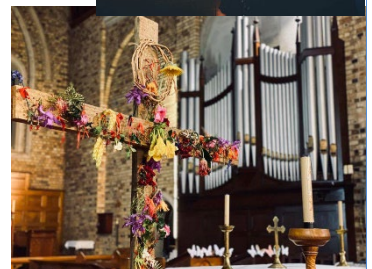
We would love to:

- Increase our biblical knowledge (study groups)
- Support and structure for our music and worship teams
- Intentionally deepening connections with online community
- Build stronger connections both within the existing church groups and the wider community.
- Be better at advertising activities and general presence.



Our Skillset:

- Lay participation and leadership skills
- Online streaming
- Administration and management
- Catering
- Fellowship and collaboration
- Agility, can change in response to circumstances and community need.
- Strong 'can will do' approach
- Faithfulness



Skillset of our Next Incumbent:

- Team Leader
- Listener
- Can delegate
- Enthusiastic Teacher
- Able to hold the space of a broad church and the diversity it brings
- Pastoral Care
- Good communicator
- Sense of humour
- Experienced

‘Capable of aligning our hearts and minds to a shared vision, to lead and grow our congregation spiritually and in discipleship and in confidence to reach out into our wider community’.

A Little About Lismore and Environs

Lismore, New South Wales, is located on the Bruxner Highway and lies at the confluence of the Wilsons River (a tributary of the Richmond River) and Leycester Creek, The state capital city of Sydney is located 764 km (475 mi) to the south via the Pacific highway. Brisbane, the state capital of Queensland, is 200 kilometres (124 mi) to the north.

Lismore's central business district is located 35 kilometres (22 mi) from the eastern coast, and 46 kilometres (29 mi) southwest of Byron Bay. The coastal town of Ballina is 36 kilometres (22 mi) away. There are a number of rainforest patches in the area, remnants of the Big Scrub. These are preserved today, with a small pocket known as Boatharbour Reserve just east of town on the Bangalow road. The nearest large and publicly accessible national park is Nightcap National Park.

Lismore enjoys a humid sub tropical climate with mild to warm temperatures all year round and ample rainfall. Temperatures in summer range between 20 °C (68 °F) and 35 °C (95 °F). The subtropical climate combined with geographical features means the urban area is unusually humid when compared with surrounding areas, with humidity levels often reaching 100% in summer. Lismore has on average 109.6 clear days annually.



The Archbishop of Canterbury's historic visit to Lismore in 2022 in response to the floods and global climate change.

Although no major environmental hazards affect the area, Lismore is renowned for frequent floods. One of the worst of these occurred in 1974, and more recently the mega floods in February and March 2022. St Andrew's church has never flooded however is isolated during flood time. The Rectory is flood free.

Lismore is the regional centre for the Northern Rivers area of New South Wales and is the headquarters of North Coast Health. Two hospitals, Lismore Base Hospital and St Vincent's Private Hospital serve the Northern Rivers population. The Norco Co-operative has its headquarters in Lismore and there are many small businesses, in addition to a large retail sector. The main campus of Southern Cross University is in Lismore.

Southern Cross University, offers undergraduate and postgraduate degrees in disciplines including business and law, tourism, humanities and social sciences, creative and performing arts, education, environment, marine and forest sciences, engineering, health and human sciences, law and Indigenous studies. The University was established in 1994 and has campuses at Coffs Harbour, New South Wales and Gold Coast, Queensland. The University has students from more than 80 countries around the world.

Lismore and the surrounding area is home to 11 public (8 primary, 3 high) and 9 private (5 primary, 4 high) schools.

CHURCH WARDENS

Dawn Back and Garry Fox: People's Wardens

Stephen Hall: Rector's Warden

PARISH NOMINATORS

Robert Weatherby, Ann Helmrich and Ray Houston

PARISH WEBSITE

www.lismoreanglicans.com

www.facebook.com/lismoreanglicans/

PARISH COUNCIL

Meets Third Tuesday of each month

THE ANGLICAN PARISH OF LISMORE

The Anglican Parish of Lismore covers an area broadly covering the Lismore Local Government Area (LGA). Within the parish there are now two (2) centres of worship;

St Andrew's - Lismore Zadoc Street, Lismore.

St Matthew's - Dunoon Approx 17 kms from St Andrew's.

N.B. St. Matthews Dunoon is subject to a review (October 2023) under the Diocesan Restructuring for Ministry and Mission plan.

<https://www.graftondiocese.org.au/wp-content/uploads/2020/10/Restructuring-for-Mission-and-Ministry-Daring-to-Live-into-Gods-Future-for-Us.pdf>

Parish Churches





St Andrew's Parish Church Lismore



St. Matthew's Dunoon

PARISH ACTIVITIES AND ORGANISATIONS

SUNDAY SERVICES:

St Andrew's	7.30am	APBA 2 nd Order Holy Communion
	9.30am	Family Worship (Messy Church 1 st Sunday of month)
St Matthew's	5pm Saturdays	APBA 2 nd Order Holy Communion

OTHER SERVICES:

St Andrew's	11am	Wednesdays APBA 2 nd Order Holy Communion
St Andrew's	8.00am	Morning Prayer (Thursdays)

AGED CARE FACILITIES – SERVICES – in Recess during Interregnum (Assisted by Lay Ministers and Retired Clergy)

Caroona Jarman	11am	2 nd Thursday
Caroona Marima	11am	3 rd Thursday
Caroona Kalina	11am	4 th Thursday
RSL Chauvel	10.30am	1 st Thursday
St Joseph's	11am	4 th Thursday
Mary's Grange	9.30am	2 nd Friday

OTHER ACTIVITIES:

Mainly Music	– weekly
Prayer Chain	– daily
Parish Council	– 3 rd Tuesday month
Bell Ringing Practice	– Wednesday and Friday 5.30pm St Andrews Society of Bellringers
Op- Shop	– Monday to Saturday. Located at suburban Goonellabah in property owned by the Parish

Cursillo

Women's Guild (Dunoon)

Emergency Food Pantry - Mon to Fri at the Parish Office

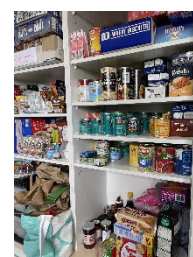
Soup Kitchen - Sunday lunch

Minister's Fellowship

Craft Group

Catering Group

Care and Share Group



The Parish Hall is currently hired to several local organisations including an acapella singing group, special school and CWA Lismore evening group.

The Incumbent is also the Chair of the Lismore Parish Centre Pre-School Management Committee and Patron of the St. Andrew's Society of Bellringers.

Lismore Parish Centre Preschool has been operating in the grounds of St. Andrews for nearly 50 years. The preschool can cater for 29 students between the ages of 3 and 5 years old. The Preschool is operated in line with School Terms as per the NSW Department of Education calendar, with the exception of term time Staff Development days.



Website: <https://parishpreschool.org>

Facebook:

<https://www.facebook.com/LismoreParishCentrePreschool>



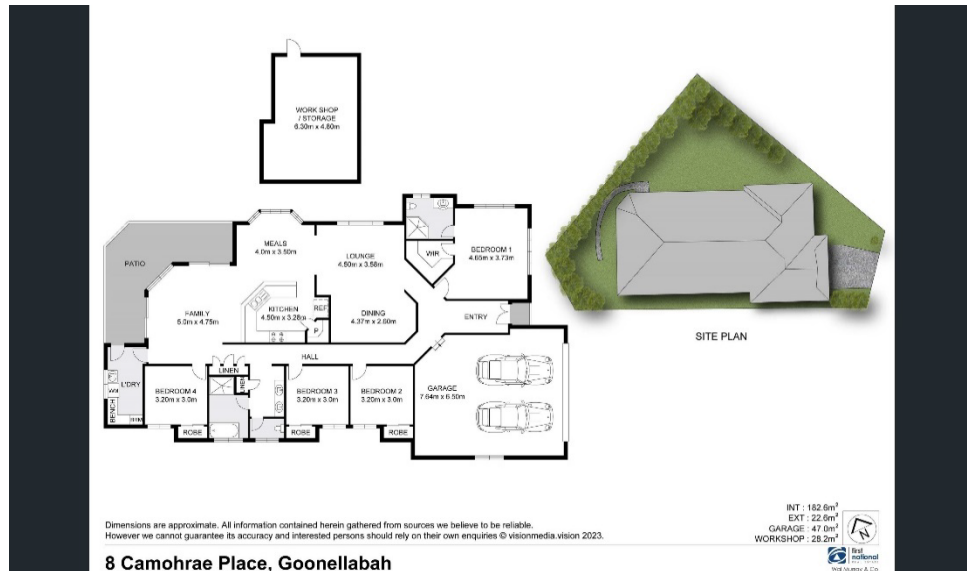
PARISH RECTORY

Situated in the suburb of Goonellabah 9.5 kms from St Andrew's church and parish office.

Purchased April 2023

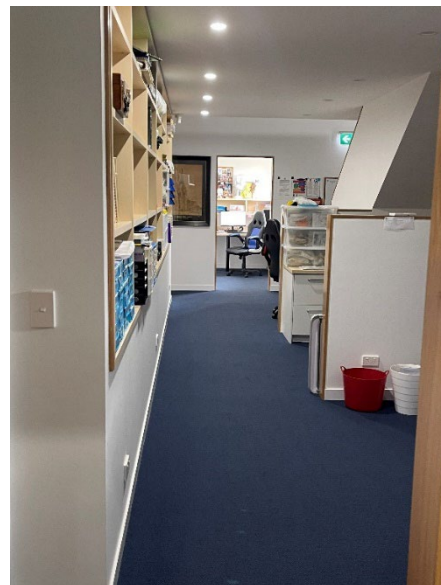


All one level, this lowset 4 bedroom home sits at the end of a quiet cul de sac. All bedrooms have built-in robes, main has an ensuite, walk-in robe plus a built-in robe. Living areas are provided by a separate lounge room plus an open plan spacious kitchen/meals/family area. The north facing outdoor patio leads to a landscaped side yard. Double lockup garage with remote control and internal access. Many extras include - plantation shutters, ducted air-conditioning, dishwasher, pantry, 2 lawn lockers, 2 tanks connected internally, solar panels and surplus built-ins throughout. Underneath, at the rear of the home is a great storage and workspace area. All this set on 749m2 block with gates to the right-hand side yard.



PARISH OFFICE

Situated in the west end of the Parish Hall near the west door to the Church. It is a large spacious 2 level office with all facilities and a private area for the Rector. A separate area is provided for the Parish Administrator.



Financials: Available upon EOI

Want to know more? Please see our appendices, for information about the strategic plan, census data, the history of the parish and more.

If you feel called to be the next Incumbent of the Parish of Lismore please send your Expression of Interest to Bishop Murray Harvey at the Bishop's Registry in Grafton. pa@graftondiocese.org.au

APPENDICES



LISMORE
ANGLICANS

Strategic Plan 2022-2026

The LISMORE ANGLICANS Vision

A place to find the heart of God and each other.

The LISMORE ANGLICANS Mission

To ENABLE people to grow and share together by embracing the heart and love of God.

The LISMORE ANGLICANS Mission Action Areas

Area 1

WORSHIP

Lismore Anglicans Love

- **PROVIDE** a broad range of worship experiences that engages with all types of worshippers.
- **ENJOY** joyful, fulfilling an enriching worship grounded in the Anglican Prayer Books.
- **EQUIP** space for worship that is attractive and well looked after.
- **GROW** an online congregation that worships via streamed services.

Area 2

EXTENSION

Lismore Anglicans Walk

- **PROVIDE** various ways for people to grow in faith, be they new to the faith or have been walking with Christ for a long time.
- **DEVELOP** our ministry team to enhance fellowship, support and knowledge of the faith.
- **CONDUCT** regular fellowship events that enable people to know and support one another.
- **EDUCATE** a fellowship team that would work to organise fellowship events.
- **CREATE** opportunities for an online congregation to grow in faith and connection with each other.

Area 3



- **ADVANCE** the pathways model of discipleship.
- **ENGAGE** in the work of reconciliation within our community.
- **ADVOCATE** social justice issues within our community
- **ENHANCE** the ministry connection with the Parish Centre Preschool.
- **GROW** the online presence through social media and the website.

Area 1 - WORSHIP *Lismore Anglicans Love*

Aims	Strategies to Succeed
<ul style="list-style-type: none"> - PROVIDE a broad range of worship experiences that engages with all types of worshippers. - ENJOY joyful, fulfilling an enriching worship grounded in the Anglican Prayer Books. - EQUIP space for worship that is attractive and well looked after. - GROW an online congregation that worships via streamed services. 	<p>PROVIDE</p> <ul style="list-style-type: none"> - Recognise the 9 different worship styles. - Have the best quality music we can get. - Connect with Conservatorium of Music and local schools. - Create a succession strategy for musicians. - Organ scholarship at the Conservatorium of Music. - Create an organist understudy position. - Revive traditional choir. - Launch a new contemporary choir. - Introduce liturgical dancing. - Conduct organ/musical recitals at lunch times during the week. <p>ENJOY</p> <ul style="list-style-type: none"> - Introduction of prayers before services. - Encourage in person congregation to engage with online audience during services. <p>EQUIP</p> <ul style="list-style-type: none"> - Care for buildings we worship in. - Plan to provide a Rectory with possible conversion of St Peter's Goonellabah and closure of place of worship. - Use the garden and lawn space for worship. <p>GROW</p> <ul style="list-style-type: none"> - Ask the online congregation to share in roster (i.e. readings which can be videoed). - Include online comments during services
Performance Measures	
<ul style="list-style-type: none"> - What different worship styles tried and how well they were carried out. - How many online worshippers participate. - Final decision taken by the Parish Council on the fate of St Peters, Goonellabah. - Create musicians succession strategy plan. - Participation of Conservatorium of Music and local schools in parish activities. 	
Evaluation Methods	
<ul style="list-style-type: none"> - Parish general worship survey. - Parishioner interviews. - Data of online participation in roster activities. - Online congregation survey. - Impact analysis by parish council on the outcome of St Peters Goonellabah on the Parish activities and financial sustainability. 	

Area 2 - EXTENSION *Lismore Anglicans Walk*

Aims	Strategies to Succeed
<ul style="list-style-type: none"> - PROVIDE various ways for people to grow in faith, be they new to the faith or have been walking with Christ for a long time. - DEVELOP our ministry team to enhance fellowship, support and knowledge of the faith. - CONDUCT regular fellowship events that enable people to know and support one another. - EDUCATE a fellowship team that would work to organise fellowship events. - CREATE opportunities for an online congregation to grow in faith and connection with each other. 	<p>PROVIDE</p> <ul style="list-style-type: none"> - Conduct “panel events” on items and issues. - Run music events. - Singalong. - Bible study groups. - <p>DEVELOP</p> <ul style="list-style-type: none"> - Encourage youth and children’s ministry. - Introduce Pastoral Care Program. - <p>CONDUCT</p> <ul style="list-style-type: none"> - Implement pub lunch activities. - Picnic at Rocky Creek Dam. - Home group/cell group/ connecting group. - Coffee groups. - Family camps. - Transport sharing initiative. - LINC activities. - Meals together. - Catering group. - Christmas Shop - <p>EDUCATE</p> <ul style="list-style-type: none"> - Develop Messy Church and Mainly Music programs. - Leadership enabling initiatives and/or programs. - <p>CREATE</p> <ul style="list-style-type: none"> - Institute zoom sessions for online participants to get to know each other.
Performance Measures	
<ul style="list-style-type: none"> - Activities conducted. - Value parish and participants have over activities. 	
Evaluation Methods	
<ul style="list-style-type: none"> - Data on activities conducted (numbers of participants and worth of activities) - Exit slips completed by participants - Data on new participants and new returning participants. - Interviews of participants on experiences 	

Area 3 - <u>OUTREACH</u> <i>Lismore Anglicans Care</i>	
Aims	Strategies to Succeed
<ul style="list-style-type: none"> - ADVANCE the pathways model of discipleship. - ENGAGE in the work of reconciliation within our community. - ADVOCATE social justice issues within our community - ENHANCE the ministry connection with the Parish Centre Preschool. - GROW the online presence through social media and the website. 	<p>ADVANCE</p> <ul style="list-style-type: none"> - Use Op Shop by having people available to talk with. - Little Kids. - Connections with other local churches. - LMF interchurch services/ministry. - Zoom morning teas. - Bell ringing activities to open more pathways into the Parish community. - <p>ENGAGE</p>
Performance Measures	

<ul style="list-style-type: none"> - Community engagement in conversation with people at the Op Shop. - Amendments of Pre-School constitution through Synod and Bishop-in-Council. - Activities conducted. - Participation in activities. - Value of activities by participants. - Increase in social media engagement. - Increase in website use. - Number of community members helped through social justice initiatives. 	<ul style="list-style-type: none"> - Include First Nations people language in Parish activities. - Have a service in First Nations people language and invite local Elders. - Bell ringing quarter peal called in local Bundjalung language. -
Evaluation Methods	ADVOCATE
<ul style="list-style-type: none"> - Evaluation by Parish Council on relationship of Pre-School with Parish. - Data on number of participants in activities. - Data on activities conducted. - Data on community members engaged. - Exit slips completed by participants. - Data on social media engagement. - Data on website use and engagement. - Parish survey 	<ul style="list-style-type: none"> - House blessings. - Anglicare - Soup kitchen Sundays -
	ENHANCE
	<ul style="list-style-type: none"> - Return the Pre-School to Parish control and develop outreach through the Pre-School. -
	GROW
	<ul style="list-style-type: none"> - Improve social media presence. - Improve ease and access of website.

2021 Census – Age Distribution of Lismore Local Government Area (LGA)

AUSTRALIAN BUREAU OF STATISTICS 2021 Census of Population and Housing

Lismore (LGA14850) 1287.7 sq Kms

G04 AGE BY SEX

Count of persons

	Males	Females	Persons		Males	Females	Persons
Age (years):							
0	200	182	382	30	245	266	512
1	201	223	426	31	222	241	462
2	227	201	426	32	199	258	460
3	206	218	422	33	223	235	455
4	256	194	452	34	260	223	489
0-4 years	1,086	1,022	2,106	30-34 years	1,151	1,224	2,375
5	250	235	491	35	248	223	472
6	227	221	451	36	209	264	472
7	282	246	534	37	231	269	505
8	272	261	532	38	261	295	550
9	285	278	558	39	245	279	526
5-9 years	1,319	1,248	2,570	35-39 years	1,190	1,336	2,529
10	296	267	560	40	251	276	531
11	286	298	582	41	256	268	524
12	313	263	577	42	261	285	548
13	301	264	568	43	243	274	514
14	320	296	618	44	233	323	559
10-14 years	1,516	1,393	2,904	40-44 years	1,243	1,425	2,667
15	308	265	577	45	279	255	538
16	283	229	505	46	279	270	550
17	290	293	583	47	288	312	602
18	270	249	519	48	268	315	590
19	241	226	474	49	298	354	651
15-19 years	1,393	1,262	2,657	45-49 years	1,416	1,517	2,929
20	260	225	484	50	312	333	649
21	246	221	468	51	299	307	609
22	215	250	469	52	286	295	579
23	214	224	434	53	269	280	557
24	238	192	422	54	322	348	668
20-24 years	1,172	1,107	2,285	50-54 years	1,485	1,569	3,055
25	237	235	473	55	311	296	611
26	226	260	480	56	317	312	629
27	227	218	443	57	322	327	647
28	227	224	455	58	327	348	676
29	259	272	526	59	338	335	669
25-29 years	1,174	1,201	2,376	55-59 years	1,608	1,621	3,227

This table is based on place of usual residence.

Please note that there are small random adjustments made to all cell values to protect the confidentiality of data. These adjustments may cause the sum of rows or columns to differ slightly from the total.

2021 Census Religious Affiliation of Lismore LGA

AUSTRALIAN BUREAU OF STATISTICS 2021 Census of Population and Housing
Lismore (LGA14850) 1287.7 sq Kms

[List of tables](#)

Find out more:

[Religious affiliation](#)

[Sex](#)

G14 RELIGIOUS AFFILIATION BY SEX

Count of persons

	Males	Females	Persons
Buddhism	220	313	535
Christianity:			
Anglican	2,324	2,764	5,085
Assyrian Apostolic	0	0	0
Baptist	144	176	316
Brethren	0	0	3
Catholic	3,803	4,308	8,119
Churches of Christ	11	17	29
Eastern Orthodox	36	42	77
Jehovah's Witnesses	75	92	165
Latter-day Saints	25	26	55
Lutheran	26	29	57
Oriental Orthodox	3	5	12
Other Protestant	64	59	117
Pentecostal	184	230	413
Presbyterian and Reformed	747	822	1,570
Salvation Army	35	46	80
Seventh-day Adventist	152	143	295
Uniting Church	715	849	1,561
Christianity, nfd	530	607	1,138
Other Christian	84	80	162
Total	8,951	10,304	19,259
Hinduism	82	80	159
Islam	70	70	141
Judaism	24	18	45
Other Religions:			
Australian Aboriginal Traditional Religions	6	10	19
Sikhism	67	61	128
Other Religious Groups(a)	145	248	387
Total	220	322	540
Secular Beliefs and Other Spiritual Beliefs and No Religious Affiliation:			
No Religion, so described	9,899	9,212	19,112
Secular Beliefs(b)	96	93	191
Other Spiritual Beliefs(c)	67	83	143
Total	10,056	9,385	19,450
Religious affiliation not stated(d)	2,135	2,079	4,212
Total	21,758	22,573	44,334

Please note that there are small random adjustments made to all cell values to protect the confidentiality of data. These adjustments may cause the sum of rows or columns to differ by small amounts from table totals.

BRIEF HISTORY OF LISMORE PARISH

- 1871 First Church (wooden)
- 1884 Lismore becomes parish
- 1904 Stage 1 new brick St Andrews
- 1914 Stage 2 Chancel, transepts added (The southern transept is known as the Warrior's Chapel. St Andrews is one of a few churches in Australia classified as a "Garrison Church" housing the "Colours" of 41st Battalion, Royal New South Wales Regiment.)
- 1914 Installation of Organ. Built by Ernst Ladegast in Sydney with English pipework and German mechanical components. Major restoration occurred in 1994-1996.
- 1935 Stage 3 (Final) Tower and Spire added
- 1936 Opening of North Coast Children's Home
- 1971 Opening of new Parish Centre
- 1976 Parish Centre Pre School opens
- 1981 Parish of Nimbin and Parish of Dunoon absorbed into Lismore Parish
- 2002 Installation of 6 change ringing bells
- 2004 Installation of further 2 bells completing a peal of 8 bells
- 2014 Centenary Celebrations
- 2020 Opening of current Parish Office
- 2021 Closure and Deconsecration of St Mark's Nimbin
- 2022 Mega Flood February significant damage to St Thomas' Wyrallah and major damage to St Andrew's bell tower and bells
- 2022 Sesquicentenary
- 2023 Deconsecration of St Peter's Goonellabah and St Thomas' Wyrallah

PARISH STATISTICS

Church Attendance in 2022 NB COVID PANDEMIC HAS AFFECTED NORMAL STATISTICS

Number of Eucharistic Services	209
(includes all services at out centres and aged care facilities)	
Number of Non Eucharistic Services	131
Home Communion Services	16
TOTAL NUMBER OF SERVICES	346
Number of Communicants during 2022	9325
Number of On Line services	131
On Line Attendance	9888
Total church attendance (all services)	9342 (includes funerals, weddings etc)
Number of Baptisms	6
Number of Weddings	2
Number of Funerals	25

Average Service Attendance;

St Andrews 7.30 am Sunday	40	2023 figures on rise post Covid
St Andrews 9.30 am Sunday	30	2023 figures on rise post Covid
St Andrews Midweek	15	
St Matthew's Dunoon Sunday	13	
St Thomas' Wyrallah Sunday	6	Closed and deconsecrated 2023

Aged Care Facilities: Caroon Jarman Caroon Kalina Caroon Marima
 Chauvel Mary's Grange St Josephs.

All services were significantly affected by Covid-19. Lockdowns throughout the year 2022 and transfer of clergy late that year, have necessitated services being placed in recess during the Interregnum.

ST ANDREWS SOCIETY OF BELLRINGERS AND HISTORY OF THE BELLTOWER

“Early in 1934 it was decided the time had come to complete the building of St Andrew’s by finishing the West Front and adding a Tower and Spire. The Tower was intended as a memorial, erected to record the services rendered by the pioneers, and the soldiers who gave their lives in the Great War. The intention was to have a book of parchment with the name recorded in perpetuity” (*Page 31 St Andrew’s Lismore 1871-1984 Reg Stitt*)

BACKGROUND

On 29 November 1934 the Governor of New South Wales, Sir Phillip Game, laid the Foundation Stone for the tower and spire of St Andrew’s Church of England, Lismore NSW.

On 16 June the following year the Archbishop of Sydney, Most Rev. H.W.K. Mowll, performed the dedication service for the tower and spire in front of a crowd estimated to number 2,500 people. The intention of building a tower and spire was to accommodate church bells, however the Great Depression and World War II intervened and plans for installing bells were shelved.

Over the years several generations raised the issue of completing the tower with a set of bells, however it was not until 1998 that plans became realistic and in 2002 six bells were installed. In 2004 two smaller bells were added to the existing ring.

TRADITIONS

Unlike some church bells in Australia, St Andrew’s Bells are rung in the English change ringing tradition. This practice is quite different to chiming bells and carillons.

TECHNICAL DETAILS

The Tenor Bell, and bells 7 to 3 were cast in England by Thomas Mears in 1831 and 1832 and retuned in 2001 by Whitechapel Bell Foundry, London, England in the key of B flat. The treble and number 2 bells were cast by Whitechapel Bell Foundry, London, England in May 2003. The bells reflect local history and have been named after past and present churches within the parish of Lismore.

ST ANDREW’S SOCIETY OF BELLRINGERS

The Society is a sub committee of the Lismore Parish Council and was formed in 2003 with first Annual General Meeting held 4 February 2004.

Currently bell ringing has been suspended due to significant damage to the tower in February 2022 and March 2022 flood events and repairs are currently occurring.

