



**EMMANUEL
ANGLICAN
COLLEGE**

Learning ~ Living ~ Leading

Emmanuel Anglican College Chaplain Employment Information Package

The College seeks an experienced and qualified Chaplain to lead the ministry life of the College Community. This package provides potential candidates with additional information on the College Strategic Plan, the College Community and the its role in the life, work and mission of the Anglican Church in the Diocese of Grafton.

Candidates are asked to consider this additional information when preparing an application, and specifically when addressing the key responsibilities as outlined in the Position Description.

EAC Strategic Plan

Towards 2030 provides the College strong strategic direction and reflects the passion for an holistic education designed for learning, living, and leading that anticipate the possibilities of the future. It clearly strategic intent to fulfil our purpose of seeking to grow each student to become a person of character who is inspired by excellence and adaptability, whose life is modelled on that of Jesus, and who, through courage, creativity, compassion, and citizenship strives to create a better world.

The Strategic Plan for 2020-2030, *Towards 2030*, is attached.

The Anglican Diocese of Grafton and the Grafton Anglican Schools Commission

Emmanuel Anglican College is part of the Anglican Diocese of Grafton. The College operates as an independent school in NSW but the School Council is responsible to the Synod and Bishop-in-Council.

The Grafton Anglican Schools Commission advises and make recommendations to the Synod, the Bishop-in-Council and the Schools, to support and monitor the Schools in respect of a variety of matters including:

- Fulfilment of the aims and objectives set out in the School's Constitution;
- Communication and cooperation among the Schools and between the Schools and the Commission and other diocesan entities;
- Communication with Federal, State and Local Governments and other relevant educational bodies on matters relating to schools and education;
- Such other matters as may be referred to the Commission by the Synod or the Bishop-in-Council.

The Commission meets quarterly and reports to the Bishop-in-Council.

The five schools in the Diocese also come together quarterly as the Diocesan School Network. The Network meetings provide an opportunity for professional learning, professional networking and building of community. The School Council Chair, Principal, Business Manager and Chaplain from each school attend the Network meetings. Commission members are also invited to attend the school hosted Diocesan School Network meetings.

The Anglican Diocese of Grafton School Ethos Statement is attached.

Daring to Live into God's Future

The Diocese of Grafton has adopted a new vision for ministry across the North Coast of NSW. The vision is inspired by the *Daring to Live into God's Future* which was endorsed at the Synod in 2020.

The document is central to the restructure for mission and ministry in the Diocese and focuses on different models of ministry. The model to be adopted by the Parish of Ballina and the Parish of Alstonville is to form a Ballina Alstonville Network. The vision for the Diocese and the College is for Emmanuel Anglican College to be part of this network. The network would see each entity retain their individual identity and Parish or School Council, while the licensed ministers (ordained and lay) work together in different ways across the whole network.

The successful applicant would be an active member of the network promoting new ways of ministry and how we can all work together across the network.



Towards 2030

Strategic Plan
2020 - 2030

Our Identity

Emmanuel Anglican College is an inclusive coeducational Anglican school community in Ballina, New South Wales. We share a passion for an holistic education designed for learning, living, and leading that anticipate the possibilities of the future.

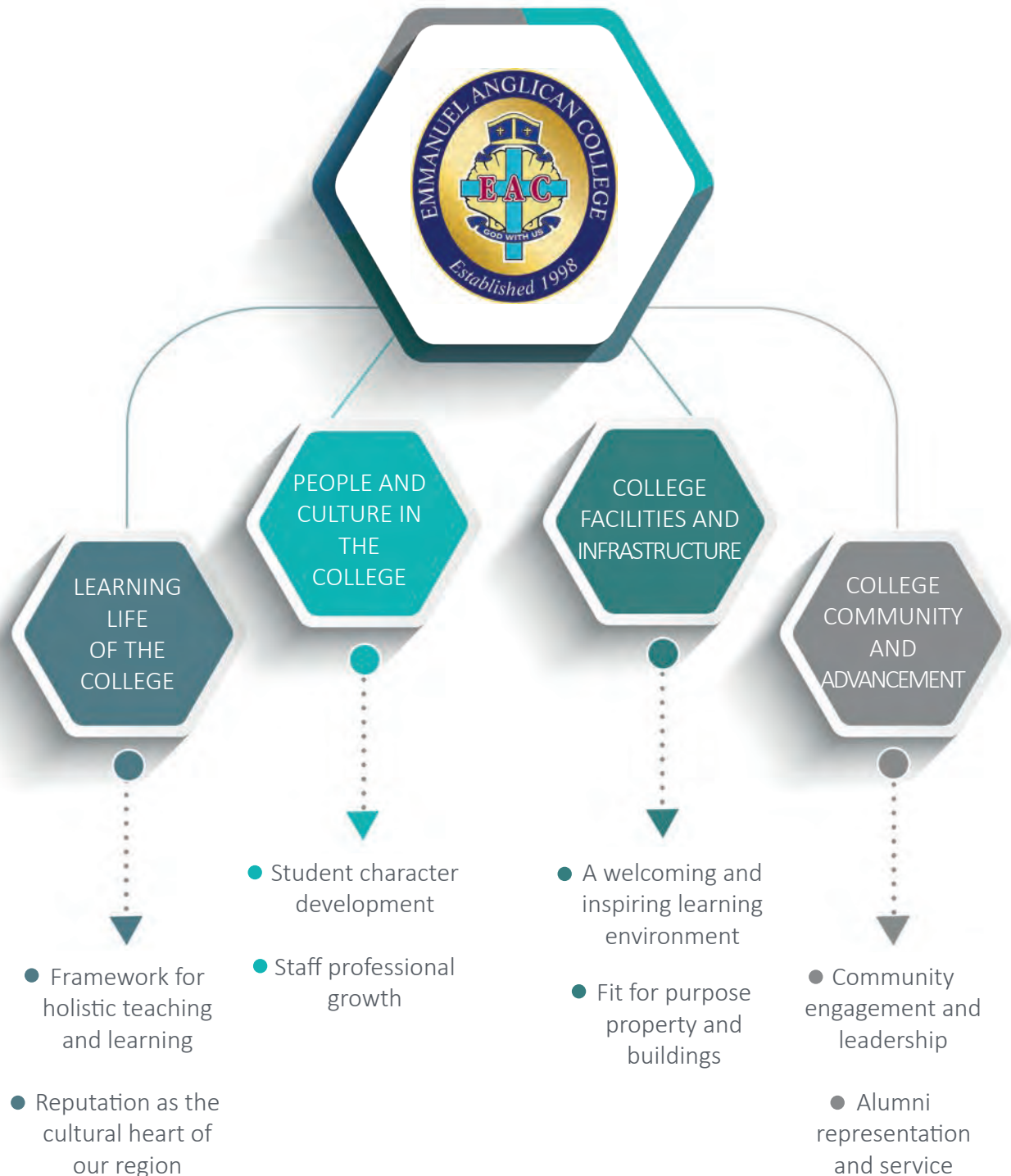


Who We Are

Our Purpose

We seek to grow each student to become a person of character who is inspired by excellence and adaptability, whose life is modelled on that of Jesus, and who, through courage, creativity, compassion, and citizenship strives to create a better world.

Our Strategic Intent



A weathered wooden cross with a spherical base, set against a blurred green background. The cross is made of light-colored wood and shows signs of age and wear. The background is a soft, out-of-focus green, suggesting a natural setting. The cross is positioned on the left side of the frame, with its base resting on a rough, light-colored surface.

Our Culture Learning, Living, Leading

An holistic education focused on these graduate outcomes aims to support the spiritual, physical, intellectual, emotional, social and cultural development of a complete, whole, community-minded person in a designed fashion.

Learning, living and leading for us must all be done in anticipation of the future. This means we strive to be forward-thinking, innovative and adaptable in seeking solutions for life.

It is important to us that we all work together to grow the knowledge, skills, disposition and habits of mind that will equip our students to be confident and ready for all aspects of life. To this end, we seek to grow each student to become a person of character:

Learning who is inspired by excellence and adaptability: *This sort of person reveals resilience and the ability to deal with challenge and change, while striving for continual learning and improvement.*

Living whose life is modelled on that of Jesus: *This sort of person seeks to live out the integrity that we see in Jesus (including love, humility, compassion, mercy, forgiveness, grace, inspiring others, charity, and generosity) in their daily life, whether they are being watched or not.*

Leading who, through courage, creativity, compassion, and citizenship, strives to create a better world: *This sort of person responds positively to the opportunities to serve in their local, regional and global communities and displays a character shaped by:*

- *Courage, which includes remaining open to continuous learning, questioning and problem-solving, persisting, and taking responsible risks;*
- *Creativity, which includes thinking about your thinking, creating, imagining and innovating, striving for accuracy, thinking and communicating with clarity and precision;*
- *Compassion, which includes gathering data through all senses, listening and understanding through empathy, thinking flexibly, and managing impulsivity; and*
- *Citizenship, which includes thinking interdependently, applying past knowledge to new situations, responding with wonderment and awe, and finding humour.*



Our passion describes our energy and commitment and influences our vibrancy, priorities and the innate love that drives us. In sharing our passion, we develop common goals and seek to put them into practice collaboratively across our whole community.

Learning refers to the process of acquiring competencies of knowledge, skills, dispositions and habits of minds through collaborative research and evidenced-informed curriculum design and content, teaching and pedagogy, assessment and reporting.

Living refers to wellbeing, welfare and character development through Christian values, relationships, service learning and leadership.

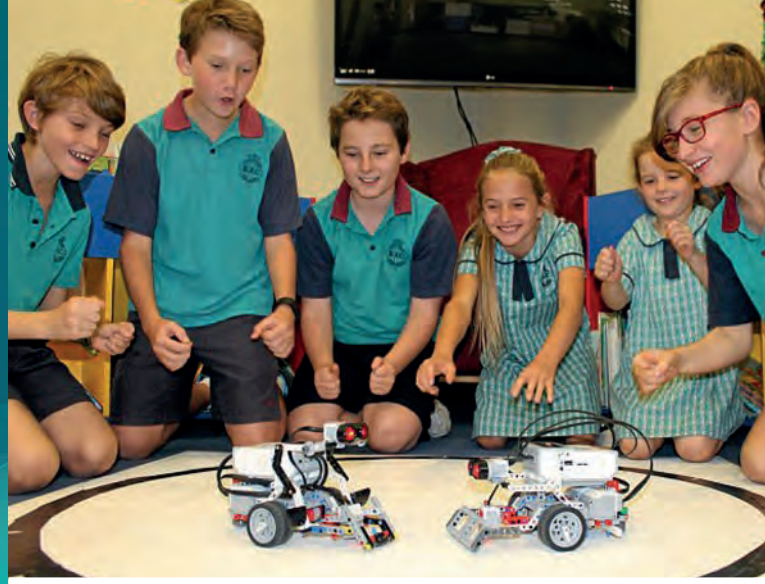
Leading in our context means inclusive, visionary, inspirational and creative servant leadership that promotes and embraces diversity.



Through our strategic intent, we will continue to grow in our commitment to, engagement with and realisation of our ethos as an Anglican coeducational school.

LEARNING LIFE OF THE COLLEGE:

- Framework for holistic teaching and learning: *We want to have a clearly defined understanding about what quality teaching and learning looks like in a context where we are developing and promoting innovative and multi-disciplinary programs that grow students in the knowledge, skills, values and learning habits that will equip them to be confident and ready for all aspects of life.*
- Reputation as the cultural heart of our region: *We want to ensure teaching, learning and participation rates in our co-curricular life are exemplars of our high educational standards and that we create an interest in the school through sport, music and the arts that enhances and engages our reputation as the cultural heart of our region.*



PEOPLE AND CULTURE IN THE COLLEGE:

- Student character development: *We want to make student character development central to everything we do to ensure our graduates are people whose lives are modelled on that of Jesus, who are inspired by excellence and adaptability, and who, through courage, creativity, compassion and citizenship, strive to create a better world.*
- Staff professional growth: *We want to grow the professional expertise, capacity and connection of our staff through a strong evidence-informed educational framework that supports and enhances their collective efficacy and their capacity to create inspired learning experiences for our students.*



COLLEGE FACILITIES AND INFRASTRUCTURE:

- A welcoming and inspiring learning environment: *We want to provide a physical space that is welcoming, where our students can be educated in inspiring facilities that enhance our educational aspirations and where community members can engage with the Christian story through good conversation, playful inquiry and quiet reflection.*
- Fit for purpose property and buildings: *We want to provide a series of innovative centres and other facilities that house multi-disciplinary and real-world learning opportunities, reinforce our established and recognised ethos and provide for new opportunities and expressions of our intent.*



COLLEGE MASTER PLAN

Total Enrolment (by 2030)
Pre-school to Year 12
1140 Students



EMMANUEL ANGLICAN COLLEGE
PROPOSED LONG TERM MASTER PLAN

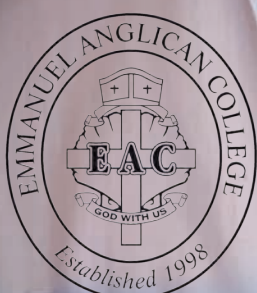
[illegible]

MASTER
NOT FOR CONSTRUCTION
27/02/20

COLLEGE COMMUNITY AND ADVANCEMENT:

- Community engagement and leadership:
We want to be a school community which people are proud to join and serve, where our leaders understand our community, set goals, design actions, allocate resources and reflect on progress in fulfilling our purpose, and where it is very clear and apparent to students, parents, and staff who enter this school that what they experience truly reflects the standards that we espouse in our ethos.
- Alumni representation and service:
We want successive generations of our graduates to demonstrate in whatever they do the character, professionalism and environmental stewardship that reflect the spiritual, physical, intellectual, emotional, social and cultural development of complete, whole, community-minded people who serve and give generously to their local, regional and global communities.





Emmanuel Anglican College
62 Horizon Drive
Ballina NSW 2478
Ph: 02 6681 5054
enquiries@eac.nsw.edu.au
www.eac.nsw.edu.au



ANGLICAN DIOCESE OF GRAFTON

Schools Ethos Statement

The Anglican Diocese of Grafton engages in school education in recognition that God is concerned for the development and wellbeing of the whole person.

Schools in the Diocese are diverse in nature and character, as is the Anglican Church itself. In response to their communities they offer excellence in teaching and learning, pastoral care, worship and service. They are coeducational centres of learning and active participants in the mission of the Church, encouraging young people to consider a personal response to the Christian faith.

Anglican Schools operate on the basis of a Christian belief in God and a Christian way of life according to the principles and traditions of the Anglican Church by:

- Developing and nurturing Christian and spiritual awareness and growth within a community that draws together pupils, staff and parents;
- Providing a balanced and dynamic educational program that challenges students to develop their unique potential through participation in intellectual, spiritual, cultural, aesthetic and physical pursuits;
- Valuing a spirit of inquiry and intellectual endeavour and encouraging students to become critical thinkers, capable of making reasoned and informed decisions;
- Supporting the development of the whole person and encouraging each child to develop self-confidence, high self-esteem and respect for others;
- Affirming the dignity and worth of all people, aspiring to be inclusive, open and responsive to diverse needs and abilities
- Encouraging students to be socially aware, to understand and serve the needs of others in the community and to exercise social, ethical, civic and environmental responsibility; and
- Fostering compassionate and respectful relationships within a safe, disciplined, caring, Christian learning community.

Anglican schools promote opportunities to develop spiritual lives through religious education programs, worship, and community service learning programs.

- Religious education programs encourage young people to think, question, challenge, investigate and reflect in their guided search for spiritual meaning and truth.
- Worship services in the Anglican tradition provide young people with opportunities to develop and express their spiritual nature.
- Community service learning programs through Anglican agencies and other bodies enable young people to learn and serve others, especially those in need, in a spirit of mutuality.

Through these opportunities, young people are equipped to make informed decisions about matters of personal faith and ethical behaviour.

Anglican schools provide an environment to nurture the whole person as a sound foundation for life.