

The Anglican Parish of Sawtell-Bonville.



Parish Profile 2021



WHO WE ARE.

The Sawtell Anglican Church is a place of worship, service and fellowship. Our worship primarily follows A Prayer Book for Australia. Our teaching is Bible based.

We are a group of Christians seeking to learn more about Jesus and His plan for our lives. A well-used saying: 'To know, to grow. To share, to care.' summarises our Mission Statement. We seek to be real with God, real with each other and real with the world.

Some of Sawtell's smiling faces.



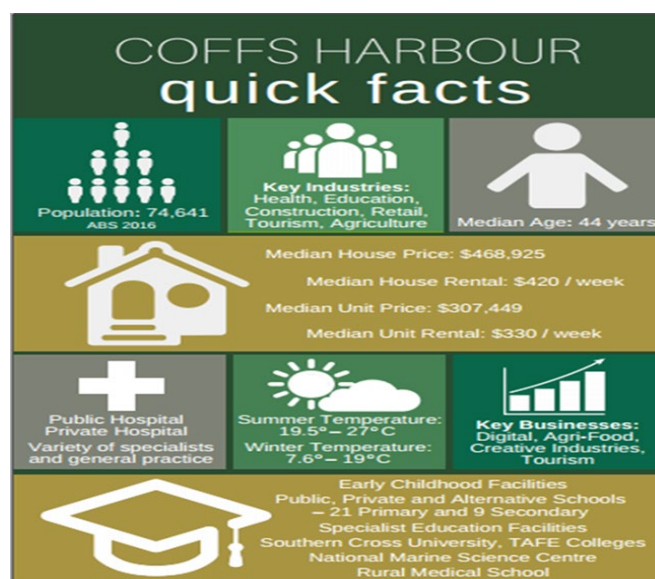
John 14:6.

Jesus answered, "I am the Way, the Truth and the Life. No one comes to the Father except through me."

WHERE WE ARE



Sawtell is a coastal destination on the Mid North Coast of NSW. We are situated midway between Sydney and Brisbane. We are part of Coffs Harbour, a regional city with a population of approximately 76,000 people. Services on the Coffs Coast include public and private schools, university and TAFE campuses, public and private hospitals, regional airport and regional shopping centres. Information about Coffs Coast can be found on www.coffscost.com.au/live



Facts and Figures about our parish area (2016 census data)

The total population of Sawtell, Toormina, Boambee and Bonville is over 19,000 with the median age of residents being 45, slightly older than the whole of the Coffs Harbour LGA.

There are approximately 3,800 families within our parish boundaries, and 21% identified as Anglicans in the last census.

The regions destination website (www.coffscoast.com) contains further information regarding the whole region. The Southern Beaches destination category highlights some of the natural and man-made experiences that make up our surrounds.



Boambee Creek

Bongil Bongil NP Picnic Area.

Sawtell Headland & Rock Pool



Sawtell Parish – an aerial view!



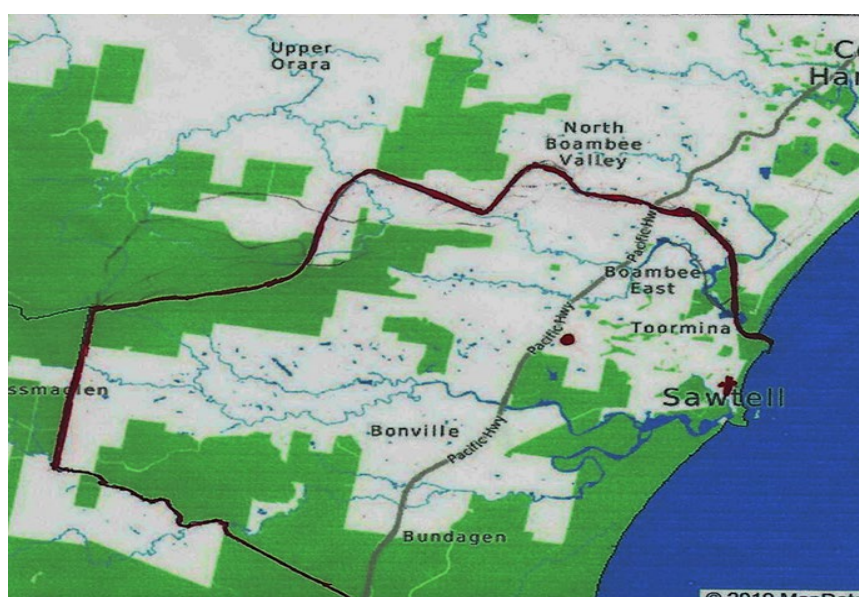
Sawtell Anglican Church ministers to four distinct communities in the southern part of the Coffs Coast area – Sawtell, Toormina, Boambee and Bonville.

Sawtell is a seaside village, about 10 kms south of Coffs Harbour.

Toormina is west of the village of Sawtell and is a residential suburb with some industry.

Boambee is west of Sawtell and Toormina. It is divided into two sections: semi-rural Boambee and the more suburban Boambee East. These two suburbs are divided by the Pacific Highway.

Bonville is in the South of our parish and is traditionally rural lands and properties.



Our Parish boundaries, with the Church marked as a + and the Rectory as a ● .

Other Churches within our Parish area are:

Boambee Baptist Community

Coffs Harbour Bible Church, Toormina

Mary Help of Christians Catholic, Sawtell

Toormina Christian Fellowship

Coffs Coast Seventh Day Adventist, Boambee

Sawtell Uniting Church

Voyage Church, Toormina.

We have good interaction with these Churches, especially at combined activities such as the Dawn services for Easter Day.

Photo at Easter Dawn Service – He is risen!



WHERE WE COME FROM

1914 Foundation Stone laid for the Church at Bonville.

1933 The Union Church on Elizabeth Street, Sawtell was built by Osmond Sawtell. It was called the Union Church, as it was to be used by multiple denominations.



In later years, the Anglicans bought the building from the other denominations.

1981 A concrete block building was consecrated as St Nicholas Anglican Church. The original wooden building became known as Old St Nick's (OSN).

Anglican services were run in Sawtell and Bonville under the umbrella of St. John the Evangelist, Coffs Harbour, until 1992.

In **1992**, Sawtell and Bonville combined forming a Provisional Parochial District.



1995 The District became a **Full Parish**.

2014 Fire completely destroyed the building of the Church of Holy Faith at Bonville.

WHAT WE DO.

SUNDAY

Owing to changes due to Covid 19, we meet each **Sunday at 9am.**

After our service, we enjoy morning tea and a chat together about the events of the week and the sermon of the day.

10am at Marian Grove: Prayer and Praise services are held on 1st and 3rd Sundays, each month. Communion is taken to the Mater Christi residents once a month, usually on a Monday morning.

TUESDAY MORNING PRAYER GROUP

A small group of people meet in the church on Tuesday mornings for prayer for our parish, the community, the diocese and the world.

BIBLE STUDY

There are a number of Bible Study groups, meeting each week to form deeper relationships around God's Word.

WOMEN'S GROUP

Ladies fellowship: Each month ladies meet together for a catch up and refreshment. This has been on hold, due to Covid19.

MEN'S GROUP

A group of 'Odd Bods' meet fortnightly for a cuppa and chat about their walk with their Lord.

mainly music

Meeting on Friday mornings during school terms, "mainly music" provides a memorable music, movement & singing session followed by a delicious morning tea. Adults can then chat while the children are playing. Apart from the many benefits of music, mainly music is a platform churches can use to connect with families in their area. As a member group of mainly music Australia, we receive resources & training to help create a great experience & to present the gospel (at Easter and Christmas and other opportune times), all in the context of relationship.

OP SHOP

Our Anglican Op Shop on First Avenue, Sawtell is a great place for a chat, or to pick up a second-hand bargain. The shop is a wonderful place for outreach with our community and visitors.



The Op Shop is managed by a committee of 3 parishioners under the guidance of the Parish Council.

Staffed entirely by volunteers, one team sorting / pricing, the other team serving / stocking. Volunteers are parishioners or people from the community.

Stock is turned over frequently and the quality is amazingly good.

All proceeds are directed to supporting and enabling the ministry of the parish.

PARISH INFORMATION

Office Phone 02 6658 1626

Email address sawtellinglicans@gmail.com

Website <http://sawtellinglican.org.au>

Facebook <https://www.facebook.com/sawtell.anglicanchurch>

Postal Address P.O. Box 115, Sawtell 2452

Street Address 15 Elizabeth Street, Sawtell 2452

PARISH REPRESENTATIVES

Locum Tenens As appointed by the Bishop

Parish Wardens Roslyn Bayliss

Anthony O'Connell

Licensed Lay Ministers Trevor Watson

Geoff Stevens

Parish Nominators Roslyn Bayliss

Ian Blow

Parish Council Members Ian Blow

Cathy Ellem

David Smith

Annette Snashall

Julie Stevens

PARISH STATISTICS FOR SERVICES

2019 Attendance: Adults – 5867 and Children - 337.

Baptisms: 5 Funerals: 11

Attendance figures include services held at Marian Grove.

Attendance varies with holiday makers / visitors.

Attendances during COVID19 have been regulated by the numbers allowed in our building. This has been up to 42 or up to 50, depending on the square metre rule.

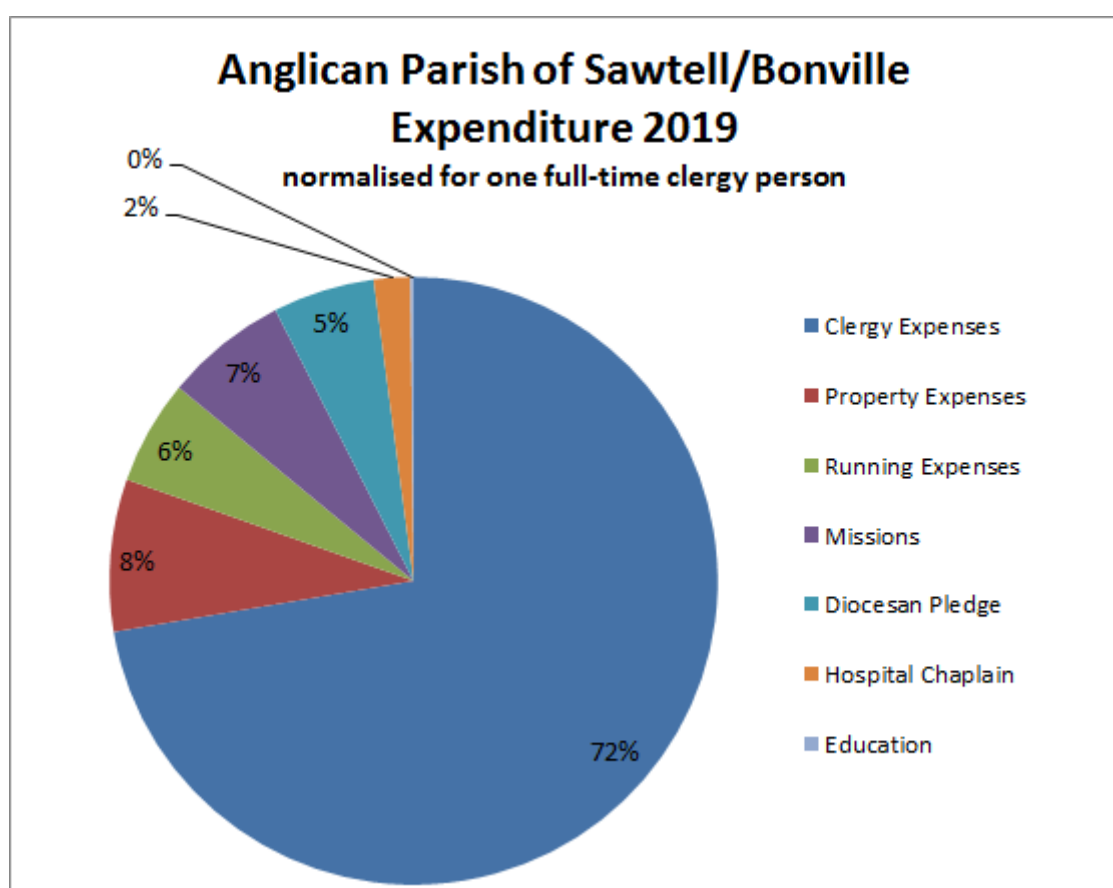
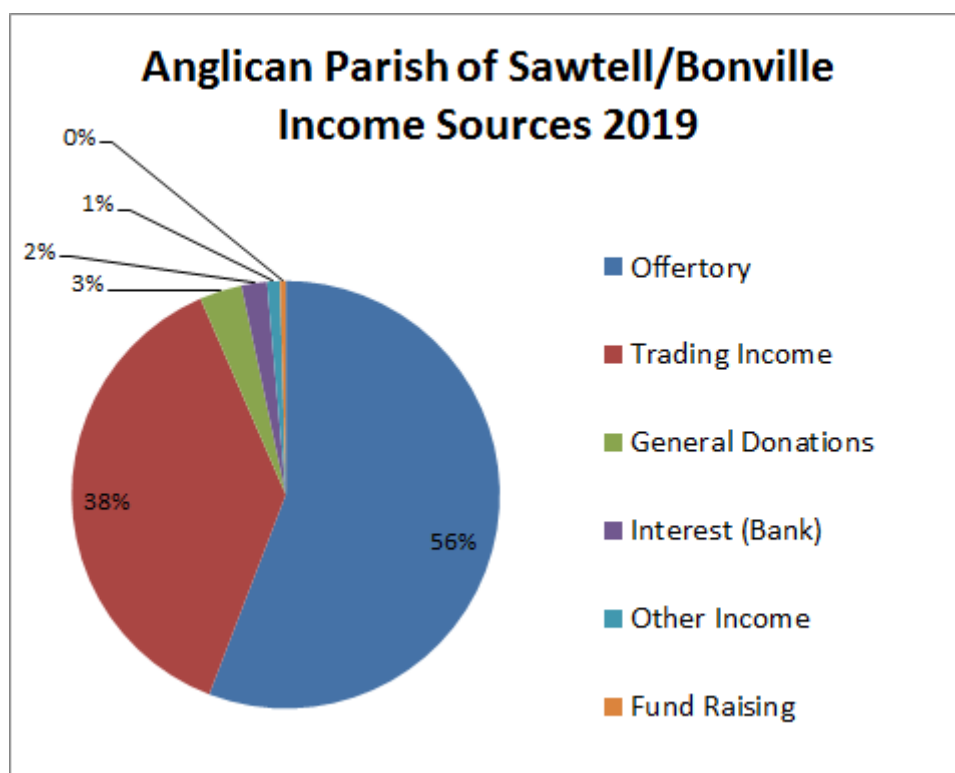
Approximately 20 of our parishioners attend the fortnightly Marian Grove service. The Mater Christi Nursing Home has a short service on 3rd Monday of each month and the average attendance is 15 people.

DIOCESAN SITUATION.

Due to the uncertainty and complexities of these times (with COVID19), there are on-going changes to how we are allowed to meet.

We would also like to advise that the Grafton Diocese is in the process of Restructuring for Mission and Ministry.

The restructure proposal for the Coffs Coast area will include closer links with the Anglican churches of Coffs Harbour, Northern Beaches (Woolgoolga) and Sawtell. This will have us working closely together by being more connected and by sharing our resources.



WHERE WE ARE NOW

SAWTELL ANGLICAN CHURCH/ OSN (Old Saint Nick's).

This is an aerial view of the Parish complex on the corner of Seventh Ave and Elizabeth Street, Sawtell.



RECTORY

The Rectory is a new house purchased in late 2019.



The address is 12 Fantail Court, Boambee East



The interior of the new rectory - some with furnishings, some taken earlier.



MISSIONS WE SUPPORT



BCA-- Parishioners receive the quarterly publications of Prayer Notes and The Real Australian. Financial support is given by way of BCA money boxes and some individual donations. Rev Mike Uptin, with his wife Sandra, is our Queensland/Nth NSW Regional Officer.



CMS-- We support Andrew and Margie Newman as they work with CMS in Uganda. Our parish partners with them by praying for them regularly, writing to them and financially supporting them.



CCSM--Coffs Coast School Ministry--Scripture in local government schools. We acknowledge the great opportunity of bringing the gospel message to the children of our area and financially support this ministry. This year CCSM have joined with Generate SRE.



COMPASSION-- The parish sponsors an 11year old girl, Nachar, from Uganda. A number of parishioners also sponsor children from other areas throughout the world.



OPERATION CHRISTMAS CHILD--In 2019 we sent approximately 90 shoeboxes to OCC. In 2020, we sent 35 shoeboxes to Madagascar with OCC.

WHO WE ARE LOOKING FOR AS OUR NEXT RECTOR?

From our Diocesan Prayer Chain, we have been praying for a Grace-filled Rector, who

- * is orthodox and evangelical.
- * is committed to the Authority of God's Word.
- * is equipped to develop team leadership.
- * will encourage and equip us, as we are sent out, into the community.
- * will manage their time /rest / family /etc. effectively.

Are you the one to encourage, grow and engage God's Mission in our parish and community?

We would love to welcome you to our parish and thank you for reading the Sawtell Parish Profile.

More photos of our area to whet your appetite!



Coffs International Stadium



Sawtell RSL Club



Sawtell Beach



Sawtell Beach and Café area



Coffs Harbour Airport



Coffs Harbour Airport



Southern Cross University



Sawtell Theatre



Toormina Medical Centre



Toormina Shopping Centre