

The Anglican Parish of Sawtell-Bonville.



Parish Profile 2020



WHO WE ARE.

The Sawtell Anglican Church is a place of worship, service and fellowship. Our worship primarily follows A Prayer Book for Australia. Our teaching is Bible based.

We are a group of Christians seeking to learn more about Jesus and His plan for our lives.

We seek to be real with God, real with each other and real with the world.

Some of Sawtell's smiling faces.



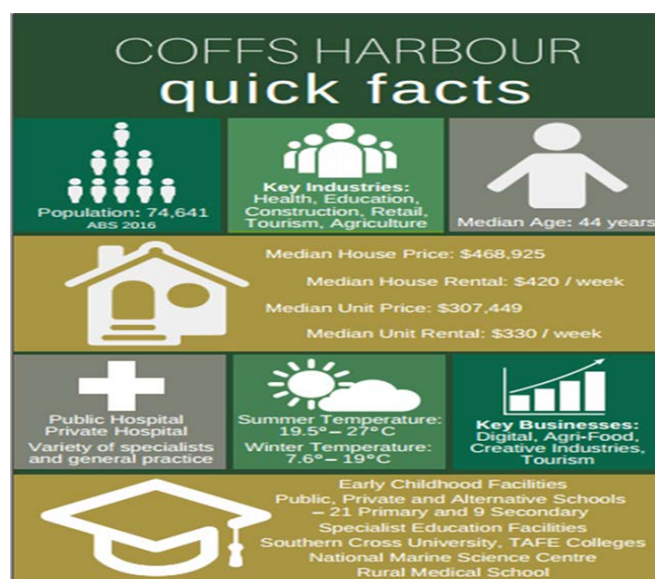
John 14:6.

Jesus answered, "I am the Way, the Truth and the Life. No one comes to the Father except through me."

WHERE WE ARE.



Sawtell is a coastal destination on the Mid North Coast of NSW. We are situated midway between Sydney and Brisbane. We are part of Coffs Harbour, a regional city with a population of approximately 76,000 people. Services on the Coffs Coast include public and private schools, university and TAFE campuses, public and private hospitals, regional airport and regional shopping centres. Information about Coffs Coast can be found on www.coffscost.com.au/live



Facts and Figures about our parish area (2016 census data)

The total population of Sawtell, Toormina, Boambee and Bonville is over 19,000 with the median age of residents being 45, slightly older than the whole of the Coffs Harbour LGA.

There are approximately 3,800 families within our parish boundaries, and 21% identified as Anglicans in the last census.

The regions destination website (www.coffscoast.com) contains further information regarding the whole region. The Southern Beaches destination category highlights some of the natural and man-made experiences that make up our surrounds.



Boambee Creek

Bongil Bongil NP Picnic Area.

Sawtell Headland & Rock Pool



Sawtell Parish – an aerial view!



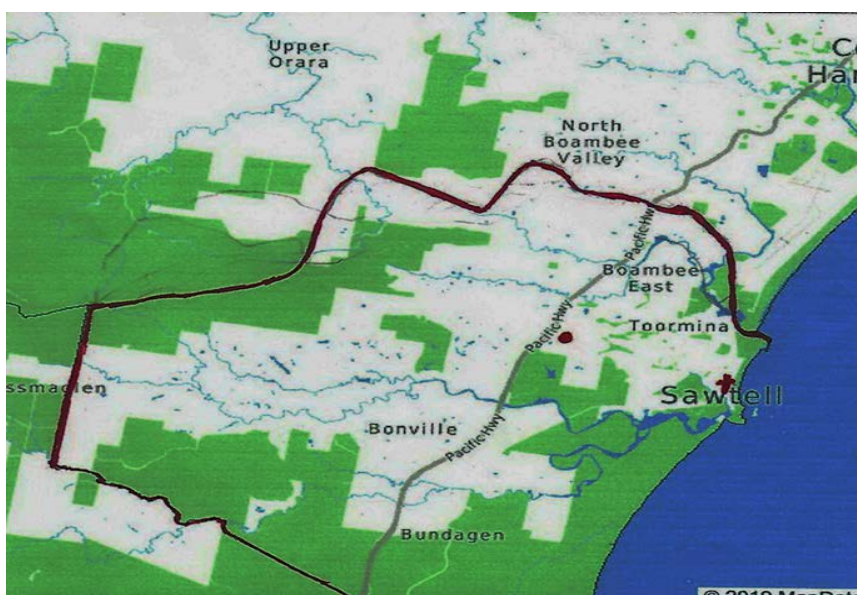
Sawtell Anglican Church ministers to four distinct communities in the southern part of the Coffs Coast area – Sawtell, Toormina, Boambee and Bonville.

Sawtell is a seaside village, about 10 kms south of Coffs Harbour.

Toormina is west of the village of Sawtell and is a residential suburb with some industry.

Boambee is west of Sawtell and Toormina. It is divided into two sections: semi-rural Boambee and the more suburban Boambee East. These two suburbs are divided by the Pacific Highway.

Bonville is in the South of our parish and is traditionally rural lands and properties.



Our Parish boundaries, with the Church marked as a + and the Rectory as a ● .

Other Churches within our Parish area are:

Boambee Baptist Community

Coffs Harbour Bible Church, Toormina

Mary Help of Christians Catholic, Sawtell

Toormina Christian Fellowship

Coffs Coast Seventh Day Adventist, Boambee

Sawtell Uniting Church

Voyage Church, Toormina.

We have good interaction with these Churches, especially at combined activities such as the Dawn services for Easter Day.

Photo at Easter Dawn Service – He is risen!



WHERE WE COME FROM.

1914 Foundation Stone laid for the Church at Bonville.

1933 The Union Church on Elizabeth Street, Sawtell was built by Osmond Sawtell. It was called the Union Church, as it was to be used by multiple denominations.



In later years, the Anglicans bought the building from the other denominations.

1981 A concrete block building was consecrated as St Nicholas Anglican Church. The original wooden building became known as Old St Nick's (OSN).

Anglican services were run in Sawtell and Bonville under the umbrella of St. John the Evangelist, Coffs Harbour, until 1992.

In **1992**, Sawtell and Bonville combined forming a Provisional Parochial District.



1995 The District became a **Full Parish**.

2014 Fire completely destroyed the building of the Church of Holy Faith at Bonville.

WHAT WE DO.

SUNDAY

8am **Holy Communion** Formal Service followed by morning tea.

10am **Family Church** Contemporary Service with morning tea to follow.

Combined morning tea between services is held when there is a 5th Sunday in the month.

10am at Marian Grove: Prayer and Praise services are held on 1st and 3rd Sundays, each month. Communion is taken to the Mater Christi residents once a month, usually on a Monday morning.

TUESDAY MORNING PRAYER GROUP

A group of people meet in the church on Tuesday morning for prayer.

BIBLE STUDY

There are a number of groups who meet each week to form deeper relationships around God's Word.

WOMEN'S GROUPS

*Craft group meets Wednesday morning – ladies bring their craft projects and share a time together.

*Ladies fellowship: Each month ladies meet together for a catch up and refreshment.

MEN'S GROUP

A group of 'Odd Bods' meet fortnightly for a cuppa and chat about their walk with their Lord.

mainly music

Meeting on Friday mornings during school terms, "mainly music" provides a memorable music, movement & singing session followed by a delicious morning tea. Adults can then chat while the children are playing. Apart from the many benefits of music, mainly music is a platform churches can use to connect with families in their area. As a member group of mainly music Australia, we receive resources & training to help create a great experience & to present the gospel (at Easter and Christmas and other opportune times), all in the context of relationship.

OP SHOP

Our Anglican Op Shop on First Avenue, Sawtell is a great place for a chat, or to pick up a second-hand bargain. The shop is a wonderful place for outreach with our community and visitors.



The Op Shop is managed by a committee of 3 parishioners under the guidance of the Parish Council.

Staffed entirely by volunteers, one team sorting / pricing, the other team serving / stocking. Volunteers are parishioners or people from the community.

Stock is turned over frequently and the quality is amazingly good.

All proceeds are directed to supporting and enabling the ministry of the parish.

PARISH INFORMATION.

Office Phone 02 66581626

Office Hours Mon, Wed, Thurs 9am-12 noon (school term)

Email address sawtellanglicans@gmail.com

Website <http://sawtellanglican.org.au>

Facebook <https://www.facebook.com/sawtell.anglicanchurch>

Postal Address P.O. Box 115, Sawtell 2452

Street Address 15 Elizabeth Street, Sawtell 2452

PARISH REPRESENTATIVES.

Locum Tenens As appointed by the Bishop

Parish Warden Trevor Watson

Licensed Lay Ministers Trevor Watson

Geoff Stevens

Parish Nominators Roslyn Bayliss

Ian Blow

Parish Council members Roslyn Bayliss

Ian Blow

Anthony O'Connell

Annette Snashall

PARISH STATISTICS FOR SERVICES.

2019

Attendance: Adults – 5867 and Children - 337.

Baptisms: 5 Funerals: 11

Attendance figures include services held at Marian Grove and Mater Christi.

The 8am service has attendances between 15 – 30

The 10am service has attendances between 30 - 50

The Marian Grove service is generally between 30 – 50 people, with approximately 20 of these being our parishioners.

The Mater Christi Nursing Home has a short service on 3rd Monday of each month and the average attendance is 15 people.

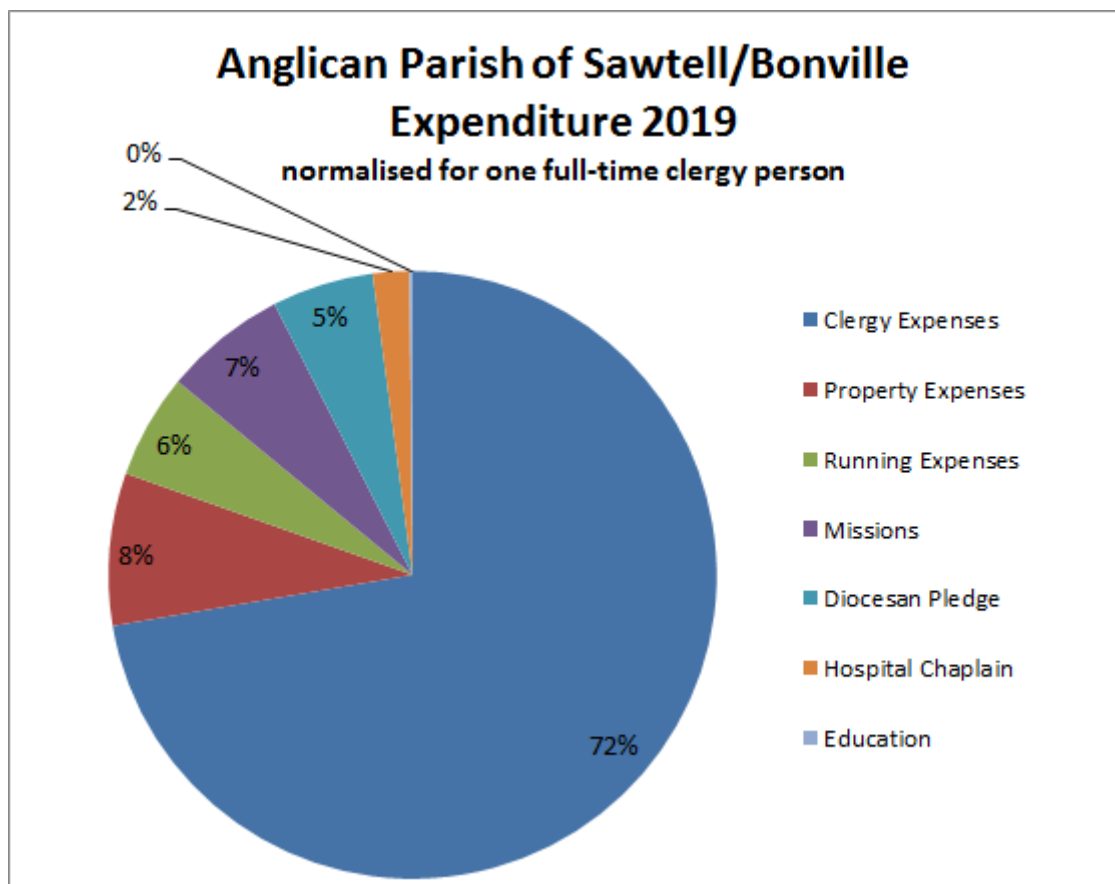
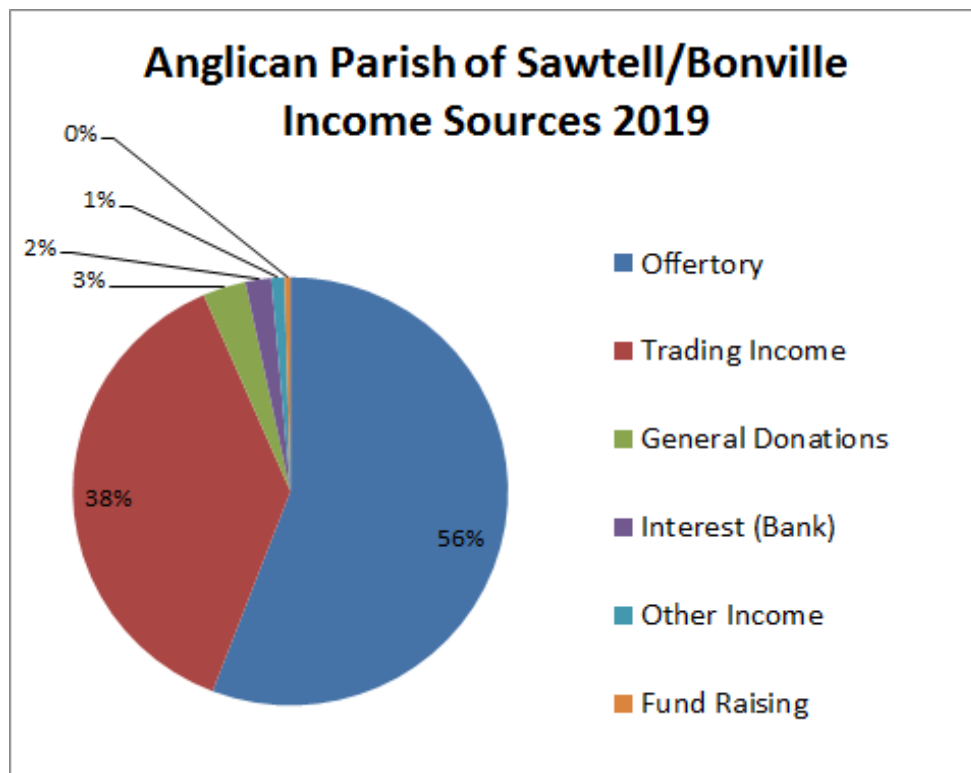
DIOCESAN SITUATION.

Due to the uncertainty and perplexities of these times (with COVID19) and changes to how we now meet, the above statistics are currently not operable.

We also need to advise that the Grafton Diocese is in the process of Restructuring for Mission and Ministry.

The restructure proposal for the Coffs Coast Area will include closer links with the Anglican churches of Coffs Harbour, Northern Beaches (Woolgoolga) and Sawtell. This will have us working closely together by being more connected and by sharing our resources.

FINANCIAL OVERVIEW.



WHERE WE ARE NOW.

SAWTELL ANGLICAN CHURCH/ OSN (Old Saint Nick's).

This is an aerial view of the Parish complex on the corner of Seventh Ave and Elizabeth Street, Sawtell.



RECTORY

The Rectory is a new house purchased in late 2019.



The address is 12 Fantail Court, Boambee East



The interior of the new rectory - some with furnishings, some taken earlier.



MISSIONS WE SUPPORT.



BCA--Parishioners receive the quarterly publications of Prayer Notes and The Real Australian. Financial support is given by way of BCA money boxes and some individual donations. David and Julie Rogers-Smith (Queensland/Nth NSW Regional Office) visit parish bi-annually.



CMS--We have supported Keith and Mary-Lou Doe as they worked with CMS in Nepal. Now that their time in Nepal has ended the parish will be making a decision about supporting other CMS missionaries.



CCSM--Coffs Coast School Ministry--Scripture in local government schools. We acknowledge the great opportunity of bringing the gospel message to the children of our area and financially support this ministry.



COMPASSION--The parish sponsors a 10 year old girl, Nachar, from Uganda. A number of parishioners also sponsor children from other areas of the world. Representatives from Compassion visit the parish occasionally.



OPERATION CHRISTMAS CHILD--In 2019 we sent approximately 90 shoe boxes to OCC.

WHO WE ARE LOOKING FOR AS OUR NEXT RECTOR.

At our parish consultation, and in our corporate worship and in our private prayers, we have been praying for a Rector or Pastor, who

- * is evangelical and orthodox in Biblical Authority.
- * is committed to teaching the Gospel each week.
- * is focused on sharing God's Good News in a variety of situations.
- * is equipped to develop team leadership and establish small groups.
- * will encourage and equip us, as we engage with the various cultures within our community with the Good News of Jesus.
- * will manage time /rest / family /etc. effectively.

Are you the one to encourage, grow and engage God's Mission in our parish and community?

We would love to welcome you to our parish and thank you for reading the Sawtell Parish Profile.

For more information, please contact the Anglican Diocese of Grafton:

Diocesan Office: Phone +612 6642 4122 or

Email the Bishop's Secretary – Maree Collett: pa@graftondiocese.org.au

More photos of our area to whet your appetite!



Coffs International Stadium



Sawtell RSL Club



Sawtell Beach



Sawtell Beach and Café area



Coffs Harbour Airport



Coffs Harbour Airport



Southern Cross University



Sawtell Theatre



Toormina Medical Centre



Toormina Shopping Centre